

(MONAT4.MONAT) 25275

ROANOKE/BLACKSBURG RGNL (WOODRUM FLD) (R.O.A.)

MONAT FOUR DEPARTURE (RNAV) AL-349 (FAA)

ROANOKE, VIRGINIA

ATIS
 132.375
 CLNC DEL
 119.7
 GND CON
 121.9 257.8
 ROANOKE DEP CON
 133.225 339.8
 ROANOKE TOWER
 118.3 257.8

RNAV 1 - DME/DME/IRU or GPS required.

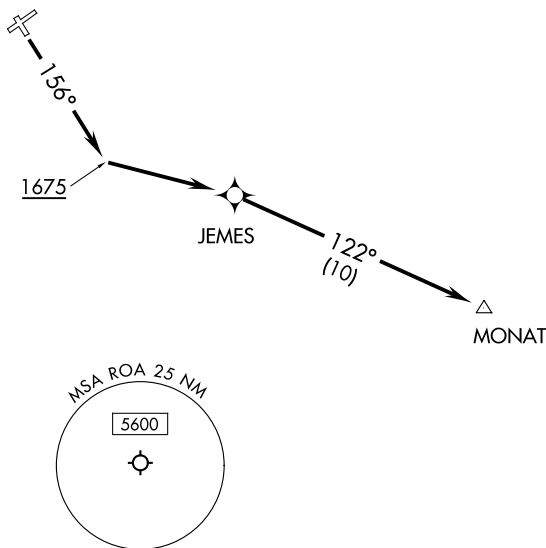
RADAR required for non-GPS equipped aircraft.

**TOP ALTITUDE:
5000**

TAKEOFF MINIMUMS:

Rwys 6, 24, 34: NA-Air Traffic.

Rwy 16: Standard with minimum climb
of 500' per NM to 1675.



NOTE: Chart not to scale.



DEPARTURE ROUTE DESCRIPTION

TAKEOFF RUNWAY 16: Climb on heading 156° to 1675, then left turn direct JEMES then on track 122° to MONAT, thence...

...maintain 5000, expect filed altitude within 10 minutes after departure.

MONAT FOUR DEPARTURE (RNAV)

(MONAT4.MONAT) 31OCT24

ROANOKE, VIRGINIA

ROANOKE/BLACKSBURG RGNL (WOODRUM FLD) (R.O.A.)

NE-3, 16 APR 2026 to 14 MAY 2026

NE-3, 16 APR 2026 to 14 MAY 2026