


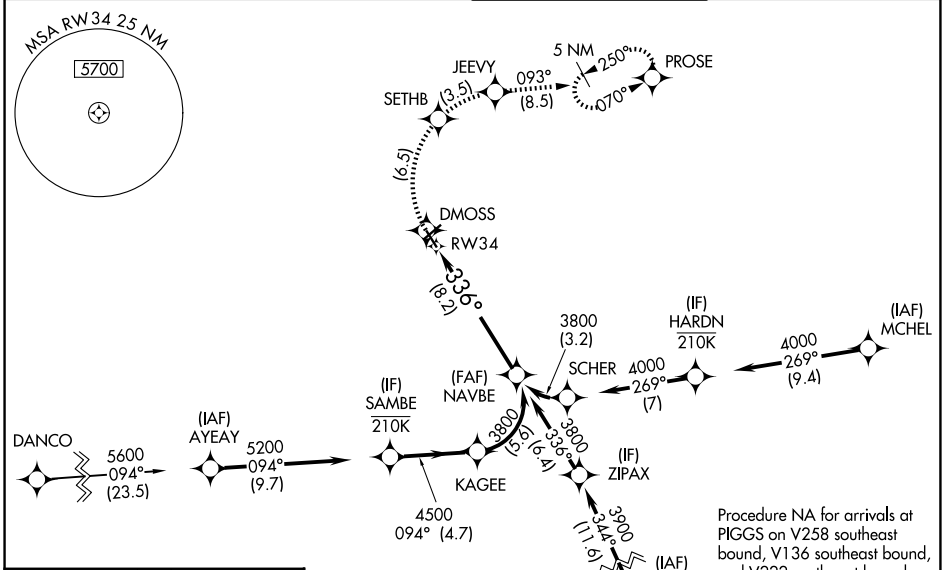
|             |          |             |
|-------------|----------|-------------|
| APP CRS     | Rwy Ldg  | <b>5810</b> |
| <b>336°</b> | TDZE     | <b>1160</b> |
|             | Apt Elev | <b>1175</b> |

# RNAV (RNP) Z RWY 34

ROANOKE/BLACKSBURG RGNL (WOODRUM FLD) (R.O.A)

|   |   |
|---|---|
| <p>RNP AR APCH. RF required.</p> <p><b>⚠</b> Missed approach requires RNP less than 1.0. For inop ALS, increase RNP 0.30* all Cats visibility to 1½ SM. Inop table does not apply to RNP 0.30. For uncompensated Baro-VNAV systems, procedure NA below -14°C or above 54°C.</p> | <p><b>MALSR</b></p>  <p>MISSED APPROACH: Climb to 6000 on track 336° to DMOSS, right turn to SETHB, right turn to JEEVY and on track 093° to PROSE and hold. * Missed approach requires minimum climb of 350 feet per NM to 4100. # Missed approach requires minimum climb of 415 feet per NM to 4100.</p> |
|---|---|

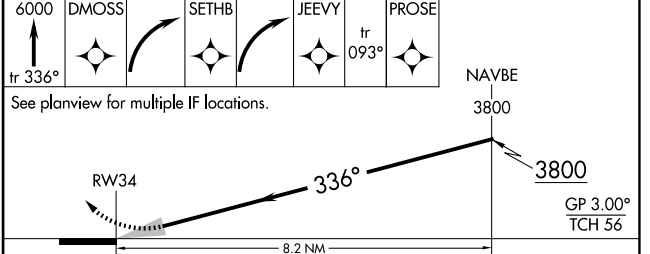
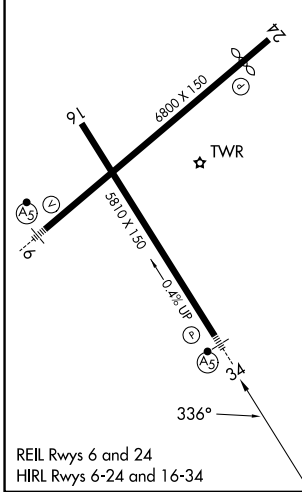
|                                   |  |  |  |
|-----------------------------------|--|--|--|
| <p>ATIS</p> <p><b>132.375</b></p> | <p>ROANOKE APP CON</p> <p><b>133.225 339.8</b></p> | <p>ROANOKE TOWER</p> <p><b>118.3 257.8</b></p> | <p>GND CON</p> <p><b>121.9 257.8</b></p> |
|-----------------------------------|--|--|--|



NE-3, 16 APR 2026 to 14 MAY 2026

NE-3, 16 APR 2026 to 14 MAY 2026

|           |          |           |
|-----------|----------|-----------|
| ELEV 1175 | <b>D</b> | TDZE 1160 |
|-----------|----------|-----------|



| CATEGORY      | A | B      | C            | D |
|---------------|---|--------|--------------|---|
| RNP 0.15 DA # |   | 1495-½ | 335 (400-½)  |   |
| RNP 0.30 DA*  |   | 1646-1 | 486 (500-1)  |   |
| RNP 0.30 DA   |   | 2115-4 | 955 (1000-4) |   |

AUTHORIZATION REQUIRED