

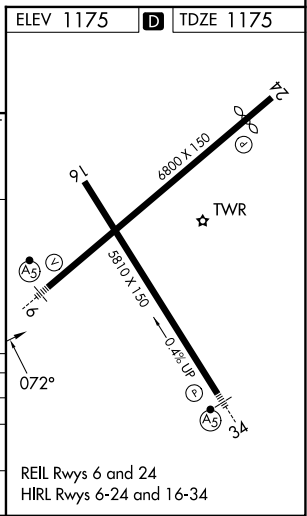
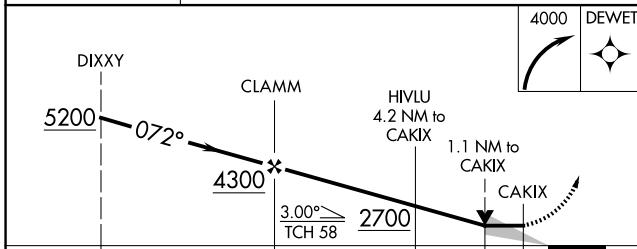
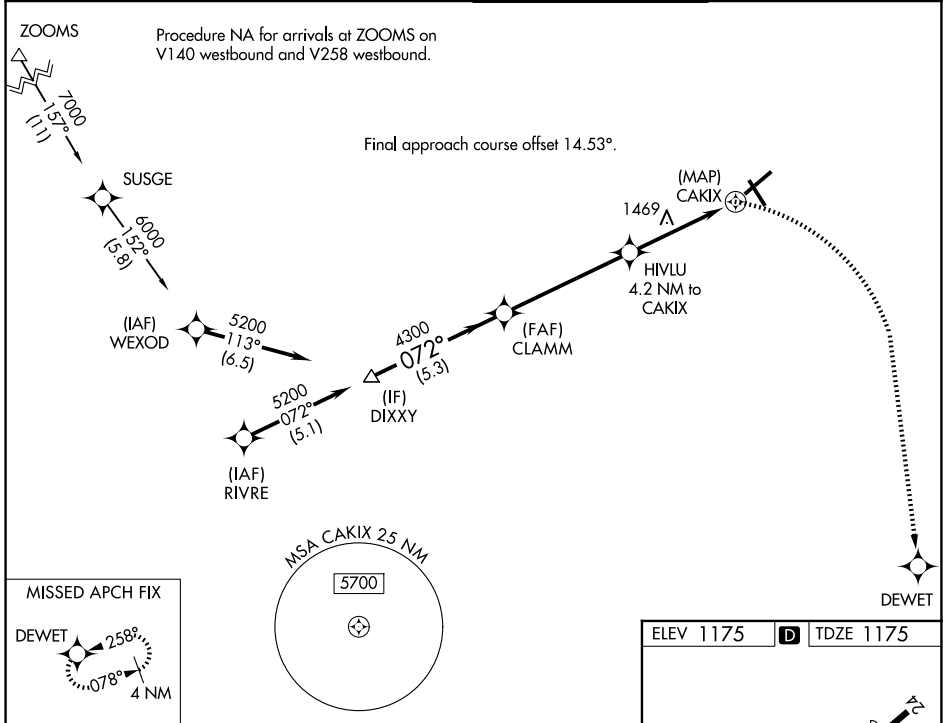
APP CRS	Rwy Ldg	<b>6800</b>
<b>072°</b>	TDZE	<b>1175</b>
	Apt Elev	<b>1175</b>

# RNAV (GPS) Y RWY 6

ROANOKE/BLACKSBURG RGNL (WOODRUM FLD) (R.O.A)

RNP APCH - GPS.	MALSR	MISSED APPROACH: Climbing right turn to 4000 direct DEWET and hold. * Missed approach requires minimum climb of 276 feet per NM to 2700.
<p>                     Circling NA northwest of Rwy 6-24.                      For inop ALS, increase LNAV Cat C and D visibility to 2½ SM.                      -12°C                 </p>		

ATIS <b>132.375</b>	ROANOKE APP CON <b>133.225 339.8</b>	ROANOKE TOWER <b>118.3 257.8</b>	GND CON <b>121.9 257.8</b>
------------------------	---	-------------------------------------	-------------------------------



CATEGORY	A	B	C	D
LNAV MDA*	1720-½	545 (600-½)	1720-1⅛	545 (600-1⅛)
LNAV MDA	1980-½ 805 (900-½)	1980-¾ 805 (900-¾)	1980-1⅞	805 (900-1⅞)
CIRCLING	1980-1 805 (900-1)	1980-1¼ 805 (900-1¼)	2460-3 1285 (1300-3)	2800-3 1625 (1700-3)

REIL Rwy 6 and 24  
HIRL Rwy 6-24 and 16-34

NE-3, 16 APR 2026 to 14 MAY 2026

NE-3, 16 APR 2026 to 14 MAY 2026