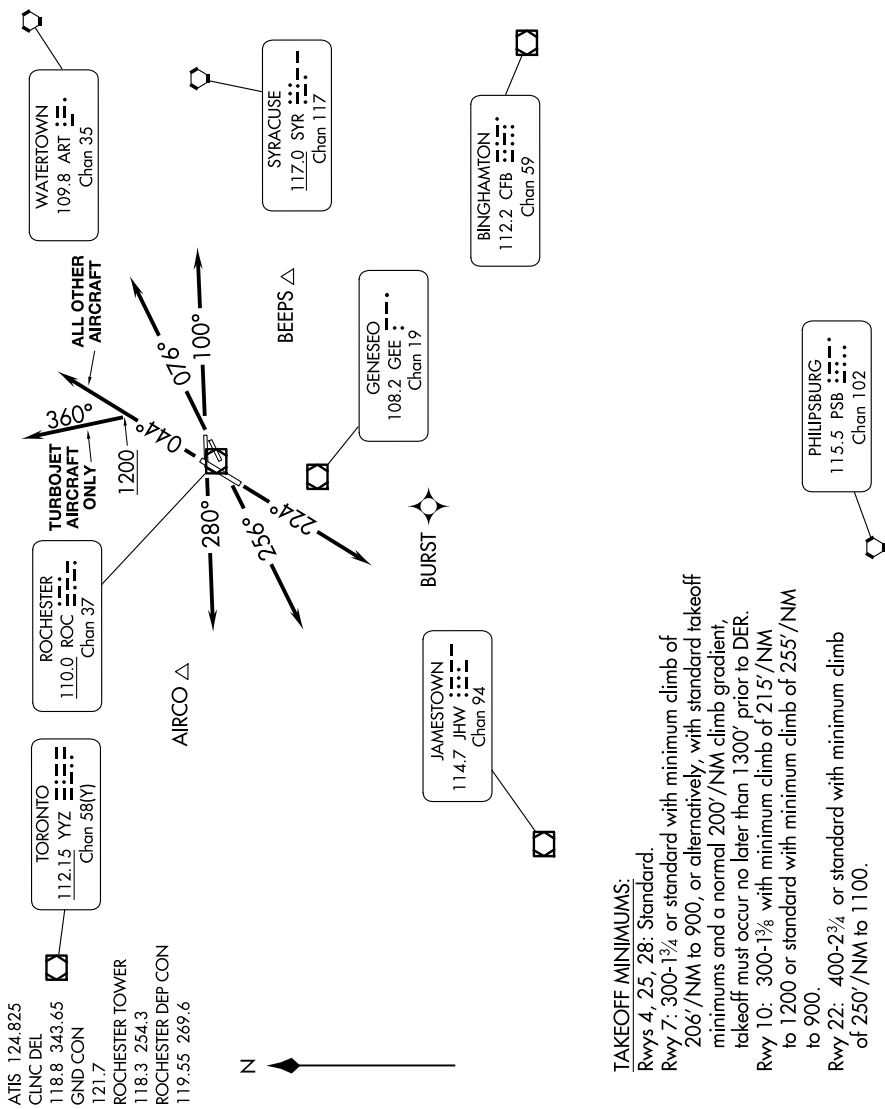


XEROX EIGHT DEPARTURE

NE-2, 16 APR 2026 to 14 MAY 2026

TOP ALTITUDE:
10000
RADAR required.



TAKEOFF MINIMUMS:
 Rwy 4, 25, 28: Standard.
 Rwy 7: 300-1³/₄ or standard with minimum climb of 206'/NM to 900, or alternatively, with standard takeoff minimums and a normal 200'/NM climb gradient, takeoff must occur no later than 1300' prior to DER.
 Rwy 10: 300-1³/₄ with minimum climb of 215'/NM to 1200 or standard with minimum climb of 255'/NM to 900.
 Rwy 22: 400-2³/₄ or standard with minimum climb of 250'/NM to 1100.

(CONTINUED ON FOLLOWING PAGE)

NE-2, 16 APR 2026 to 14 MAY 2026