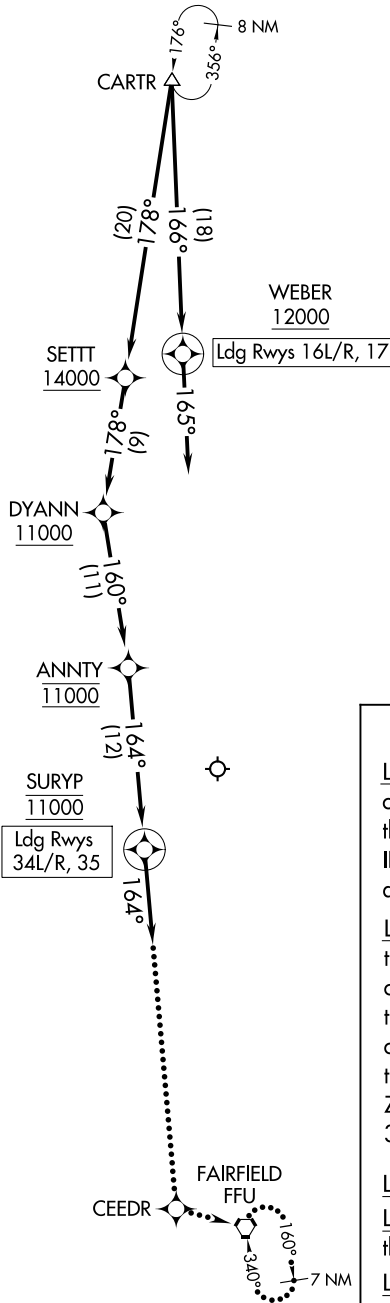


CARTR ONE ARRIVAL (RNAV) Arrival Routes

RNAV 1 - GPS.
RADAR required.

SALT LAKE CITY APP CON
124.9 351.675
D-ATIS
124.75 125.625



NOTE: Jet aircraft only.
 NOTE: GPS required.
 NOTE: ROCK SPRINGS Transition, BOBRT Transition,
 ATC assigned only.

NOTE: Chart not to scale.

ARRIVAL ROUTE DESCRIPTION

LANDING RUNWAYS 16L/R, 17: From CARTR on track 166° to cross WEBER at or above 12000, then on track 165°. Expect RADAR vectors for ILS or RNAV approach to Rwy 16L/R or Rwy 17 approach.

LANDING RUNWAYS 34L/R, 35: From CARTR on track 178° to cross SETTT at or above 14000, then on track 178° to cross DYANN at or above 11000, then on track 160° to cross ANNTY at 11000, then on track 164° to cross SURYP at 11000, then on track 164°. Expect RADAR vectors for RNAV (RNP) Z RWY 34L approach or RADAR vectors to 34L/R, RWY 35 final approach course.

LOST COMMUNICATIONS

LANDING NORTH: After SURYP proceed to CEEDR, then left turn to FFU VORTAC and hold at 11000.

LANDING SOUTH: After WEBER proceed on the ILS or RNAV RWY 16L approach.

SW-4, 16 APR 2026 to 14 MAY 2026

SW-4, 16 APR 2026 to 14 MAY 2026