

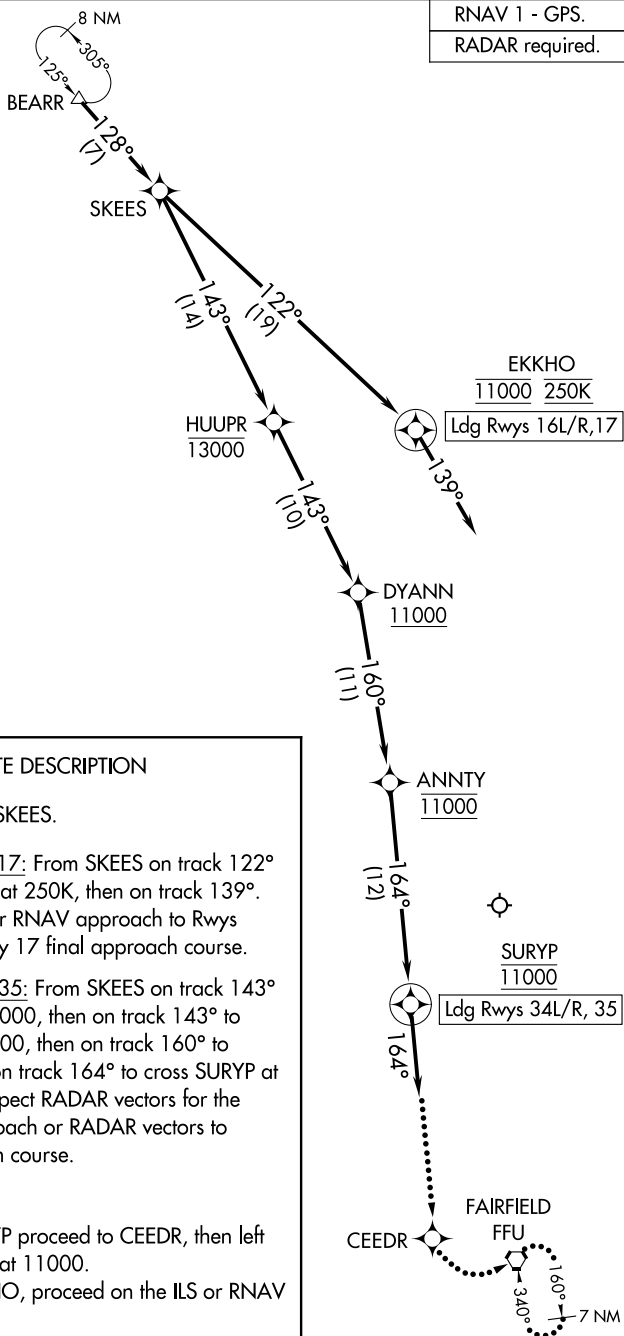
SKEES SIX ARRIVAL (RNAV) Arrival Routes

AL-365 (FAA)

SALT LAKE CITY INTL (SLC)
SALT LAKE CITY, UTAH

SALT LAKE CITY APP CON
124.9 290.3
D-ATIS
124.75 125.625

RNAV 1 - GPS.
RADAR required.



NOTE: Jet aircraft only.
NOTE: GPS required.

NOTE: Chart not to scale.

ARRIVAL ROUTE DESCRIPTION

From BEARR on track 128° to SKEES.

LANDING RUNWAYS 16L/R, 17: From SKEES on track 122° to cross EKKHO at 11000 and at 250K, then on track 139°. Expect RADAR vectors for ILS or RNAV approach to Rwys 16L/R or RADAR vectors to Rwy 17 final approach course.

LANDING RUNWAYS 34L/R, 35: From SKEES on track 143° to cross HUUPR at or below 13000, then on track 143° to cross DYANN at or above 11000, then on track 160° to cross ANNTY at 11000, then on track 164° to cross SURYP at 11000, then on track 164°. Expect RADAR vectors for the RNAV (RNP) Z RWY 34L approach or RADAR vectors to Rwys 34L/R, 35 final approach course.

LOST COMMUNICATIONS

LANDING NORTH: After SURYP proceed to CEEDR, then left turn to FFU VORTAC and hold at 11000.

LANDING SOUTH: After EKKHO, proceed on the ILS or RNAV RWY 16L approach.

SKEES SIX ARRIVAL (RNAV) Arrival Routes

SALT LAKE CITY, UTAH
SALT LAKE CITY INTL (SLC)

SW-4, 16 APR 2026 to 14 MAY 2026

SW-4, 16 APR 2026 to 14 MAY 2026