

HI-VOR Z or TACAN RWY 21

VORTAC SJT 115.1 Chan 98	APCH CRS 235°	Rwy ldg 5939 TDZE 1906 Arpt Elev 1919
--	-------------------------	--

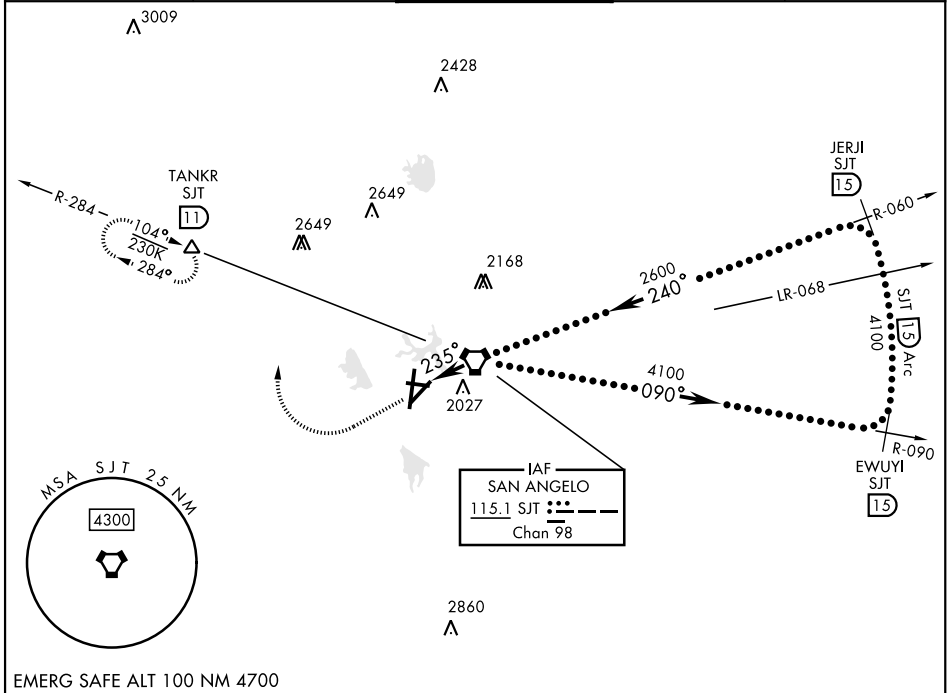
[USAF]

SAN ANGELO RGNL/MATHIS FLD (KSJT)

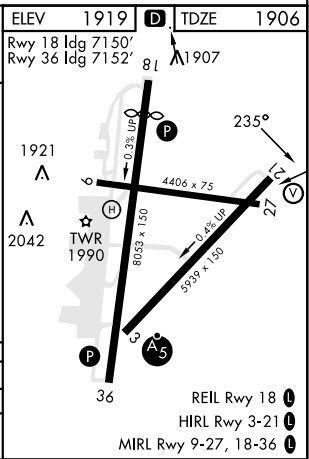
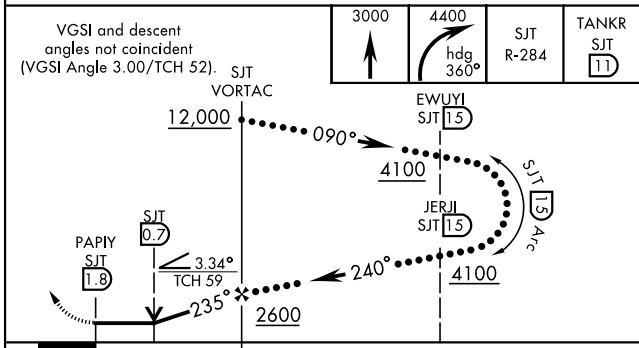
DME required
*Circling not authorized for CAT D W of Rwy 18-36.

MISSED APPROACH: Climb to 3000 then climbing right turn to 4400 on heading 360° and SJT VORTAC R-284 to TANKR INT/11 DME and hold, continue climb-in-hold to 4400.

ATIS 128.45 319.0	SAN ANGELO APP CON ★ 125.35 354.1	MATHIS TOWER ★ 118.3 (CTAF) 284.7	GND CON 121.9 348.6	UNICOM 122.95
-----------------------------	---	--	-------------------------------	-------------------------



EMERG SAFE ALT 100 NM 4700



CATEGORY	C	D	E
S-21	2300-1 1/8	394 (400-1 1/8)	
CIRCLING*	2500-1 1/2 581 (600-1 1/2)	2580-2 661 (700-2)	NOT AUTHORIZED

ELEV 1919	TDZE 1906
Rwy 18 ldg 7150'	Rwy 36 ldg 7152'
REIL Rwy 18	HIRL Rwy 3-21
MIRL Rwy 9-27, 18-36	

HI-VOR Z or TACAN RWY 21

SC-3, 16 APR 2026 to 14 MAY 2026

SC-3, 16 APR 2026 to 14 MAY 2026