

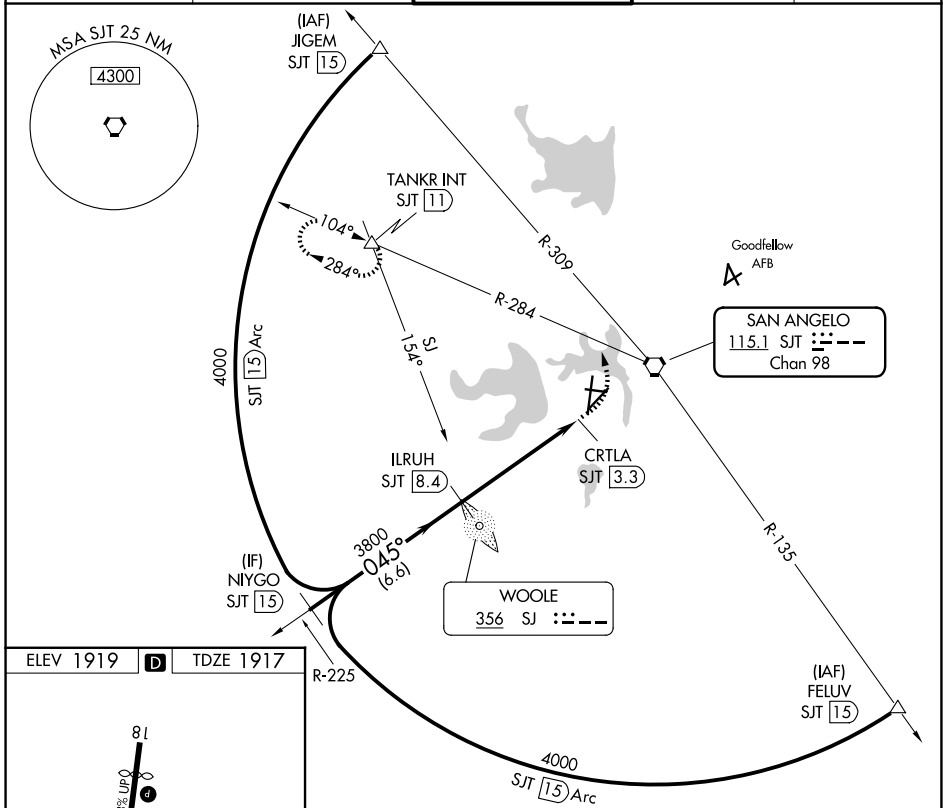
VORTAC SJT 115.1 Chan 98	APP CRS 045°	Rwy Ldg 5940 TDZE 1917 Apt Elev 1919
--	------------------------	--

VOR Y or TACAN Y RWY 3

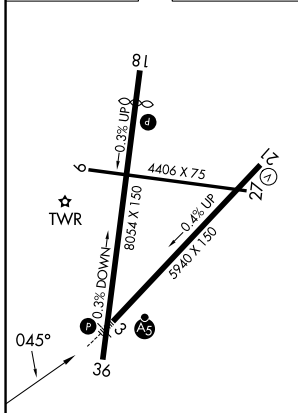
SAN ANGELO RGNL/MATHIS FLD (SJT)

DME required.	MALSR 	MISSED APPROACH: Climbing left turn to 4400 on SJT VORTAC R-284 to TANKR INT/11 DME and hold, continue climb-in-hold to 4400.
▼ Inop table does not apply to Cat A and B. ▲ Circling NA for Cat E west of Rwy 18-36. For inop ALS, increase Cat C-E visibility to 2 SM.		

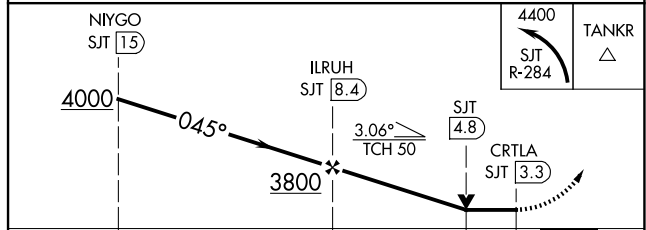
ATIS 128.45 319.0	SAN ANGELO APP CON ★ 125.35 354.1	MATHIS TOWER ★ 118.3 (CTAF) 284.7	GND CON 121.9 348.6	UNICOM 122.95
-----------------------------	---	---	-------------------------------	-------------------------



ELEV 1919	D	TDZE 1917
-----------	----------	-----------



REIL Rwy 18 **Ⓛ**
HIRL Rwy 3-21 **Ⓛ**
MIRL Rws 9-27 and 18-36 **Ⓛ**



CATEGORY	A	B	C	D	E
S-3	2620/50	703 (800-1)	2620-1½	703 (800-1½)	
CIRCLING	2620-1	701 (800-1)	2620-2 701 (800-2)	2700-2½ 781 (800-2½)	2700-2¾ 781 (800-2¾)

SC-3, 16 APR 2026 to 14 MAY 2026

SC-3, 16 APR 2026 to 14 MAY 2026