

# ALAMO FIVE DEPARTURE

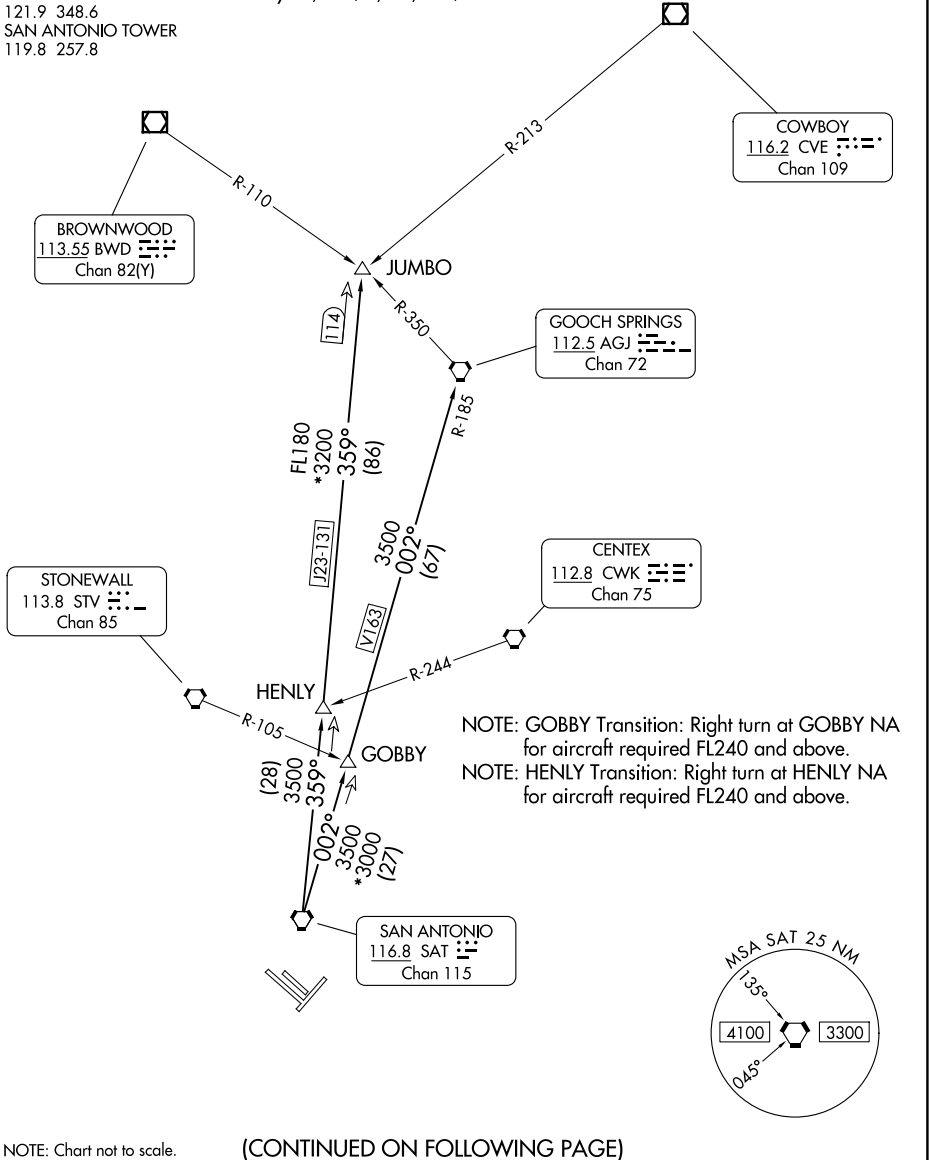
RADAR required.

**TOP ALTITUDE:  
5000**

SAN ANTONIO DEP CON  
125.1 307.0 (4, 22, 31)  
127.1 269.1 (13)  
D-ATIS  
118.9  
CLNC DEL  
126.7  
CPDLC  
GND CON  
121.9 348.6  
SAN ANTONIO TOWER  
119.8 257.8

### TAKEOFF MINIMUMS

Rwys 4, 13L/R, 22, 31L/R: Standard.



SC-3, 16 APR 2026 to 14 MAY 2026

SC-3, 16 APR 2026 to 14 MAY 2026

NOTE: Chart not to scale.

(CONTINUED ON FOLLOWING PAGE)