

HI-TACAN Z RWY 34

TACAN KSY Chan 57	APCH CRS 343°	Rwy ldg 11,550 TDZE 660 Arprt Elev 690
----------------------	------------------	--

[USAf]

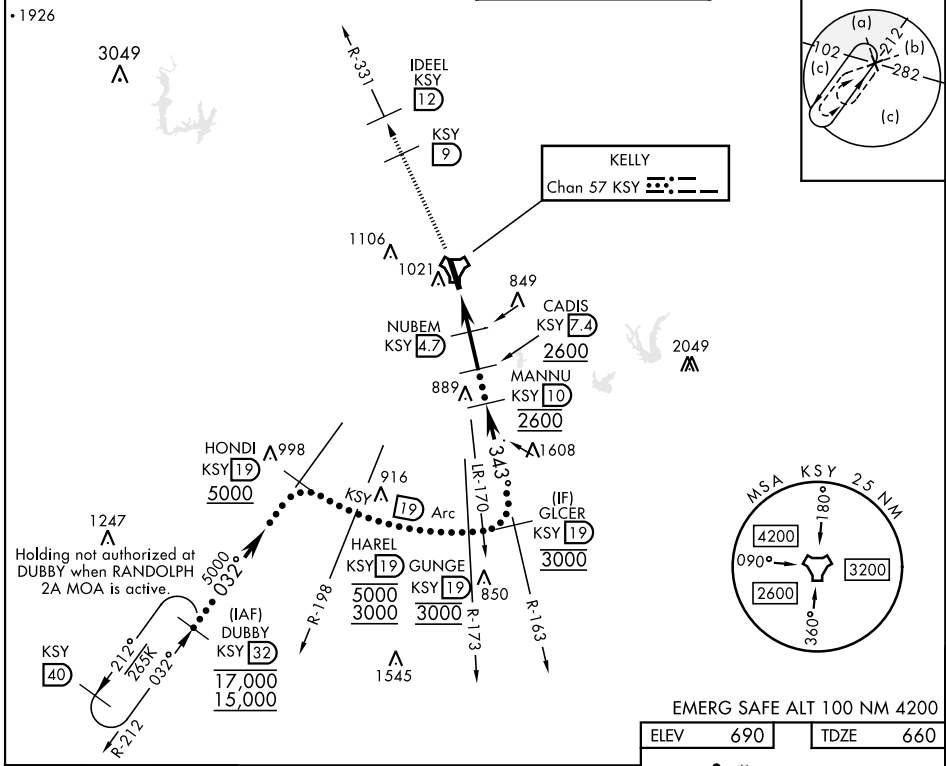
KELLY FLD (KSKF)

▼ * When ALS inop, increase vis to 1¼ miles.
 ** Circling not authorized E of Rwy 16-34.

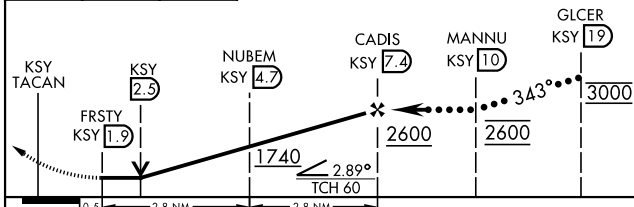


MISSED APPROACH: Climb to 2500 via KSY TACAN R-331 until 9 DME, cross 9 DME at 2500, then continue climb to 3100 to IDEEL/12 DME. Expect ATC instructions.

ATIS 120.45 273.5	SAN ANTONIO APP CON 118.05 353.5	TOWER 124.3 322.35	GND CON 121.8 289.4
-----------------------------	--	------------------------------	-------------------------------

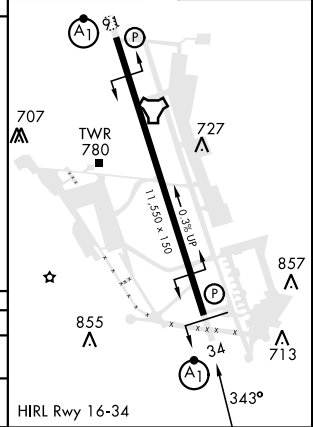


2500 KSY R-331	KSY R-331 9	3100 IDEEL KSY 12	VGSI and descent angles not coincident (VGSI angle 3.02/TCH 93).
-------------------	----------------	----------------------	--



CATEGORY	C	D	E
S-34 *	1100/40	440	(500-¾)
CIRCLING **	1340-1¾ 650 (700-1¾)	1900-3 1210 (1300-3)	

EMERG SAFE ALT 100 NM 4200	
ELEV 690	TDZE 660



HI-TACAN Z RWY 34

SC-3, 16 APR 2026 to 14 MAY 2026

SC-3, 16 APR 2026 to 14 MAY 2026