

# ILS or LOC/DME Y RWY 16

LOC I-SKF <b>110.1</b>	APCH CRS <b>158°</b>	Rwy ldg <b>11,550</b> TDZE <b>690</b> Arprt Elev <b>690</b>
---------------------------	-------------------------	---

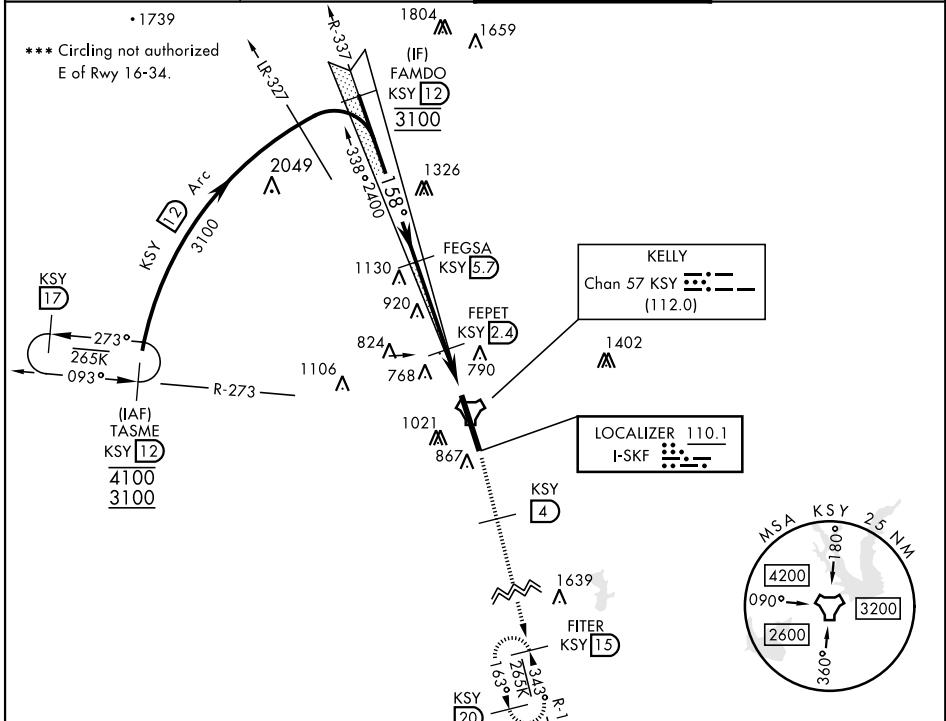
[USAF]

KELLY FLD (KSKF)

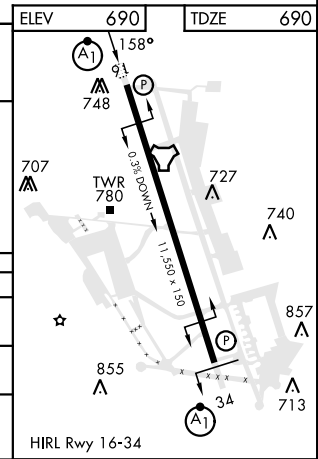
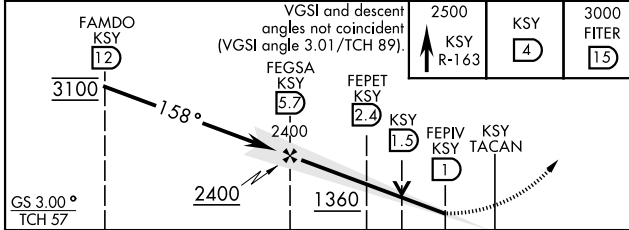
\*When ALS inop, increase RVR to 40 and vis to ¾ mile.  
 \*\*When ALS inop, increase CAT AB RVR to 55 and vis to 1 mile, CAT CDE RVR to 60 and vis to 1½ miles.
 

 ALSF-1 MISSED APPROACH: Climb to 2500 via KSY R-163 until 4 DME, then continue climb to 3000 to FITER/1.5 DME and hold. Non-TACAN equipped aircraft expect alternate missed approach instructions.

<b>ATIS</b> <b>120.45 273.5</b>	<b>SAN ANTONIO APP CON</b> <b>118.05 353.5</b>	<b>TOWER</b> <b>124.3 322.35</b>	<b>GND CON</b> <b>121.8 289.4</b>
------------------------------------	---	-------------------------------------	--------------------------------------



EMERG SAFE ALT 100 NM 4200



CATEGORY	A	B	C	D	E
S-ILS 16*	890/24		200	(200-½)	
S-LOC/DME 16**	1080/24	390 (400-½)	1080/35	390	(400-¾)
<b>C</b> CIRCLING ***	1200-1 510 (600-1)	1280-1 590 (600-1)	1340-1¾ 650 (700-1¾)	1900-3 1210 (1300-3)	

# ILS or LOC/DME Y RWY 16

SC-3, 16 APR 2026 to 14 MAY 2026

SC-3, 16 APR 2026 to 14 MAY 2026