

SAN ANTONIO, TEXAS

# RNAV (GPS) RWY 16

WAAS CH 52296 W16A	APCH CRS 158°	Rwy ldg TDZE Arprt Elev 690	11,550 690 690
--------------------------	------------------	--------------------------------	----------------------

(USAF)

KELLY FLD (KSKF)

RNP APCH

▼ \* When ALS inop, increase RVR to 40, vis to 3/4 miles.  
 \*\* When ALS inop, increase RVR to 55, vis to 1 mile.  
 \*\*\* When ALS inop, increase CAT AB RVR to 55, and vis to 1 mile;  
 CAT CDE RVR to 60 vis to 1 1/8 miles.

ALSF-1

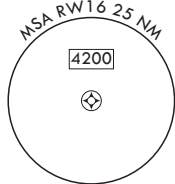
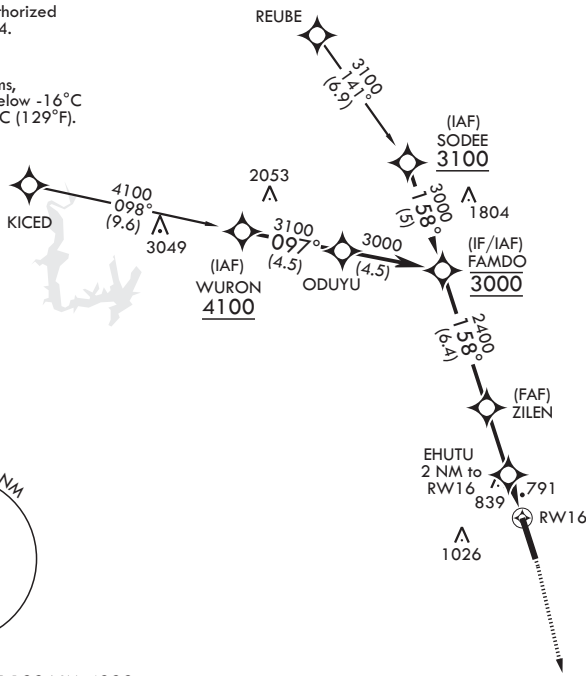


MISSED APPROACH: Climb to 1500 then climbing right turn to 3000 direct FITER and hold.

ATIS 120.45 273.5	SAN ANTONIO APP CON 118.05 353.5	KELLY TOWER 124.3 322.35	GND CON 121.8 289.4
----------------------	-------------------------------------	-----------------------------	------------------------

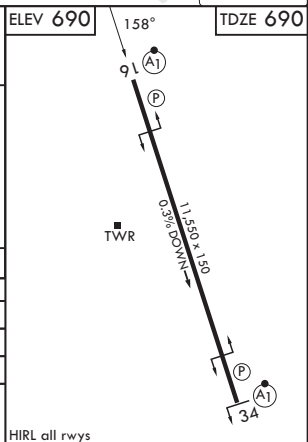
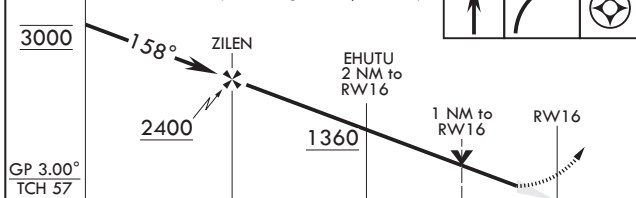
\*\*\*\* Circling not authorized  
E of Rwy 16-34.

For uncompensated  
BARO-VNAV systems,  
LNAV/VNAV NA below -16°C  
(3°F) or above 54°C (129°F).



EMERG SAFE ALT 100 NM 4200

FAMDO	VGSI and descent angles not coincident (VGSI Angle 3.01/TCH 89).	1500	3000	FITER	ELEV 690	158°	TDZE 690
-------	--	------	------	-------	----------	------	----------



CATEGORY	A	B	C	D	E
LPV DA*	890/24		200	(200-1/2)	
LNAV/VNAV DA**	1065/35		375	(400-5/8)	
LNAV MDA***	1100/24	410 (500-1/2)	1100/40	410	(500-3/4)
CIRCLING****	1200-1 510 (600-1)	1280-1 590 (600-1)	1340-1 1/4 650 (700-1/4)	1900-3 1210 (1300-3)	

HIRL all rwys

SAN ANTONIO, TEXAS  
Amdt 3 04SEP25

29°23'N - 98°35'W

KELLY FLD (KSKF)

# RNAV (GPS) RWY 16

SC-3, 16 APR 2026 to 14 MAY 2026

SC-3, 16 APR 2026 to 14 MAY 2026