

SAN ANTONIO, TEXAS

RNAV (GPS) RWY 34

WAAS CH 65364 W34A	APCH CRS 338°	Rwy ldg TDZE Arpt Elev	11,550 660 690
--------------------------	------------------	---------------------------	----------------------

(USAF)

KELLY FLD (KSKF)

RNP APCH-GPS

- * When ALS inop, increase RVR to 40, vis to 3/4 miles.
- ** When ALS inop, increase RVR to 60, vis to 1 1/8 miles.
- *** When ALS inop, increase CAT AB RVR to 55, vis to 1 mile; CAT CDE RVR to 60, vis to 1 1/8 miles.

ALSF-1

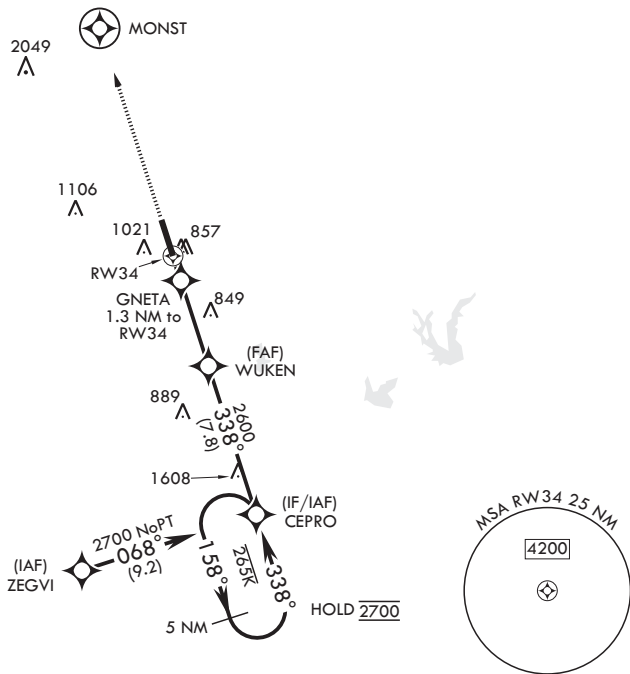


MISSED APPROACH: Climb to 3000 direct MONST. Expect ATC instructions.

ATIS 120.45 273.5	SAN ANTONIO APP CON 118.05 353.5	KELLY TOWER 124.3 322.35	GND CON 121.8 289.4
----------------------	-------------------------------------	-----------------------------	------------------------

**** Circling NA E of Rwy 16-34.

For uncompensated Baro-VNAV systems, LNAV/VNAV NA below -16°C (3°F) or above 54°C (129°F).



SC-3, 16 APR 2026 to 14 MAY 2026

SC-3, 16 APR 2026 to 14 MAY 2026

3000 ↑ MONST	VGSI and descent angles not coincident (VGSI Angle 3.02/TCH 93).	ELEV 690	TDZE 660
	<p>CEPRO 158 Holding Pattern 2700</p> <p>WUKEN 338° 2600</p> <p>GNETA 1.3 NM to RW34</p> <p>RW34 1120</p> <p>GP 3.00° TCH 60</p>	<p>707</p> <p>TWR 780</p> <p>BCN</p> <p>727</p> <p>11,500 ± 105</p> <p>0.33% OB</p> <p>855</p> <p>34</p> <p>338°</p>	
CATEGORY	A B C D E		
LPV DA*	860/24 200 (200-½)		
LNAV/VNAV DA**	1080/40 420 (400-¾)		
LNAV MDA***	1080/24 420 (400-½)	1080/40 420 (400-¾)	
CIRCLING****	1200-1 510 (600-1)	1280-1 590 (600-1)	1340-1¼ 650 (700-1¼) 1900-3 1210 (1300-3)

SAN ANTONIO, TEXAS
Amdt 3 04SEP25

29°23'N - 98°35'W

KELLY FLD (KSKF)

RNAV (GPS) RWY 34