

SNIDR TWO DEPARTURE (RNAV)

SC-3, 16 APR 2026 to 14 MAY 2026

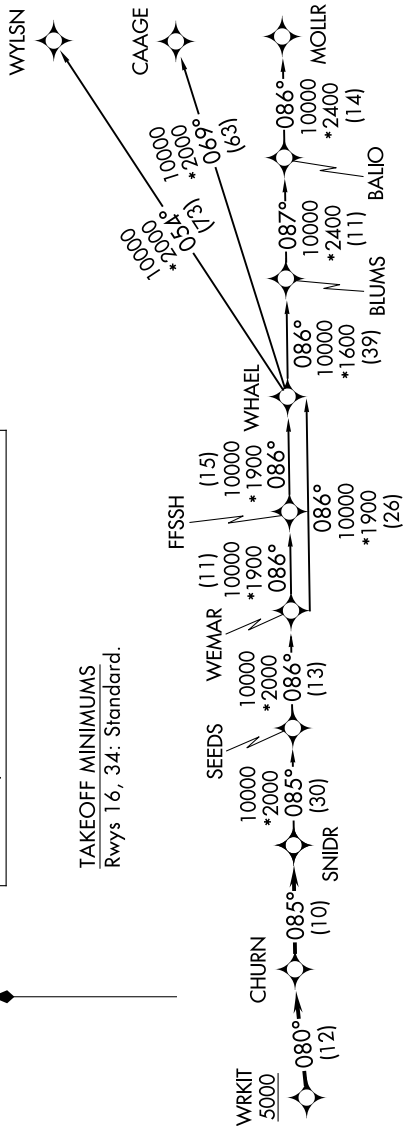
SAN ANTONIO DEP CON
 125.7 290.225
 ATIS
 120.45 273.5
 GND CON
 121.8 289.4
 KELLY TOWER
 124.3 322.35



RNAV 1 - DME/DME/IRU or GPS.

RADAR required for non-GPS equipped aircraft.
RADAR required.

**TOP ALTITUDE:
ASSIGNED BY ATC**

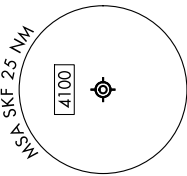
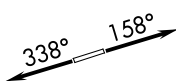


TAKEOFF MINIMUMS
Rwys 16, 34: Standard.

DEPARTURE ROUTE DESCRIPTION

TAKEOFF RUNWAY 16: Climb on heading 158° or as assigned by ATC, for vectors to WRKIT, thence . . .
 TAKEOFF RUNWAY 34: Climb on heading 338° or as assigned by ATC, for vectors to WRKIT, thence . . .
 . . . on track 080° to CHURN, then on track 085° to SNIDR. Expect filed altitude 10 minutes after departure.

- BLUMS TRANSITION (SNIDR2.BLUMS)
- CAAGE TRANSITION (SNIDR2.CAAGE)
- FFSSH TRANSITION (SNIDR2.FFSSH)
- MOLLR TRANSITION (SNIDR2.MOLLR)
- SEEDS TRANSITION (SNIDR2.SEEDS)
- WEMAR TRANSITION (SNIDR2.WEMAR)
- WHAEL TRANSITION (SNIDR2.WHAEL)
- WYLSN TRANSITION (SNIDR2.WYLSN)



NOTE: Chart not to scale.

SNIDR TWO DEPARTURE (RNAV)

SC-3, 16 APR 2026 to 14 MAY 2026