

(TJANO2.TJANO) 25219

AL-371 (FAA)

KELLY FLD (SKF)  
SAN ANTONIO, TEXAS

# TJANO TWO DEPARTURE (RNAV)

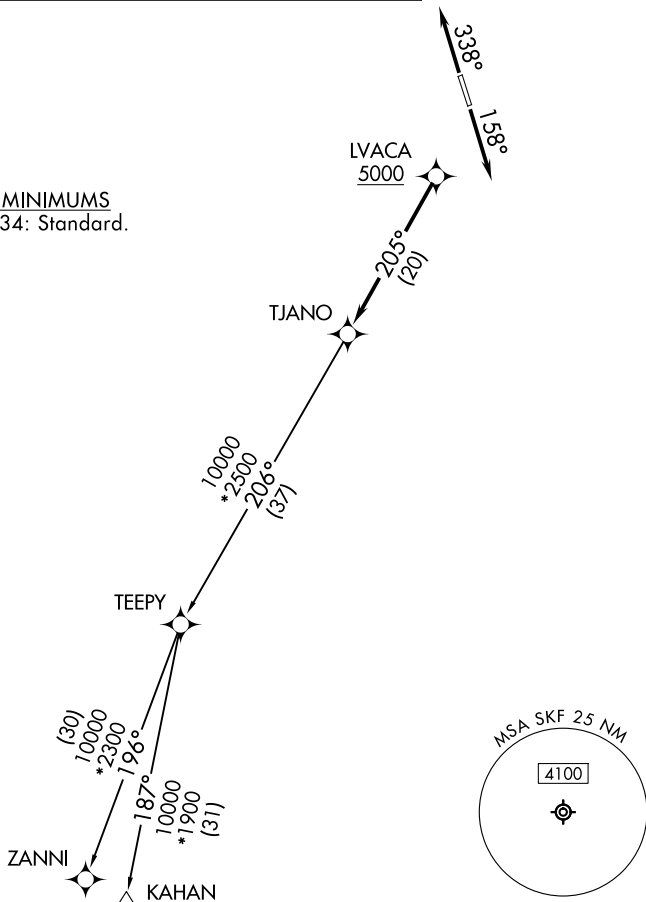
SAN ANTONIO DEP CON  
125.7 290.225  
ATIS  
120.45 273.5  
GND CON  
121.8 289.4  
KELLY TOWER  
124.3 322.35

RNAV 1 - DME/DME IRU or GPS.

RADAR required for non-GPS equipped aircraft.  
RADAR required.

**TOP ALTITUDE:  
ASSIGNED BY ATC**

TAKEOFF MINIMUMS  
Rwys 16, 34: Standard.



NOTE: Chart not to scale.

## DEPARTURE ROUTE DESCRIPTION

TAKEOFF RUNWAY 16: Climb on heading 158° or as assigned by ATC, for vectors to LVACA, thence. . .

TAKEOFF RUNWAY 34: Climb on heading 338° or as assigned by ATC, for vectors to LVACA, thence. . .

. . .on track 205° to TJANO, then on transition. Maintain ATC assigned altitude. Expect filed altitude 10 minutes after departure.

KAHAN TRANSITION (TJANO2.KAHAN)

ZANNI TRANSITION (TJANO2.ZANNI)

# TJANO TWO DEPARTURE (RNAV)

(TJANO2.TJANO) 07AUG25

SAN ANTONIO, TEXAS  
KELLY FLD (SKF)

SC-3, 16 APR 2026 to 14 MAY 2026

SC-3, 16 APR 2026 to 14 MAY 2026