

TACAN Y RWY 16

TACAN KSY Chan 57	APCH CRS 151°	Rwy Ldg 11,550 TDZE 690 Arprt Elev 690
----------------------	------------------	---

AL-371 [USAF]

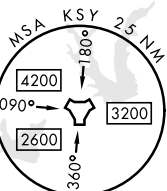
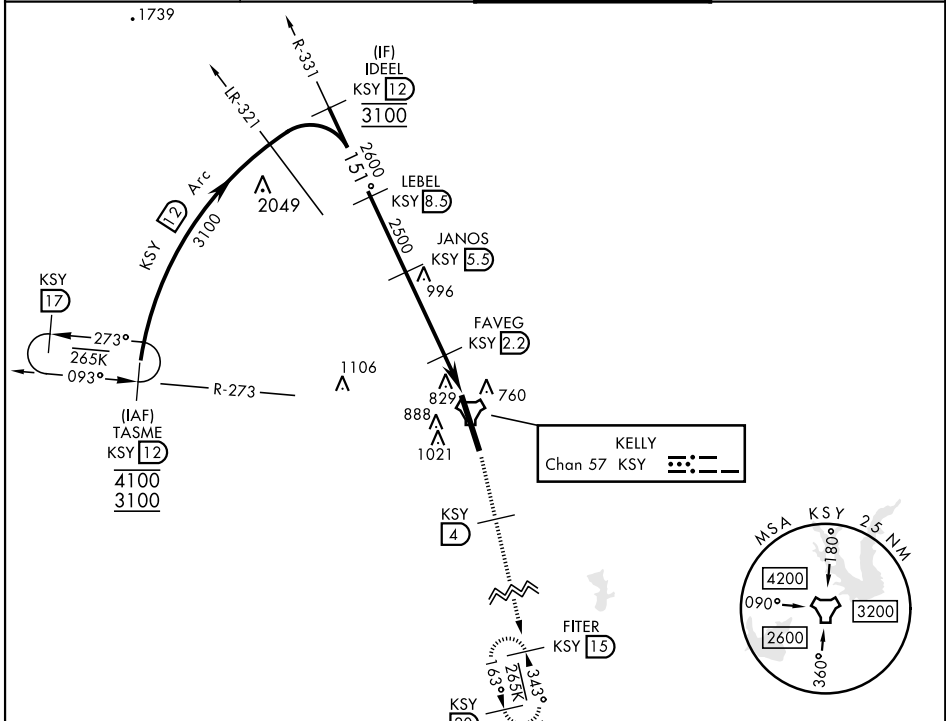
KELLY FLD (KSKF)

▼ * When ALS inop, increase CAT AB RVR to 55 and vis to 1 mile, CAT CDE RVR to 60 and vis to 1½ miles.
 ** Circling not authorized E of Rwy 16-34.

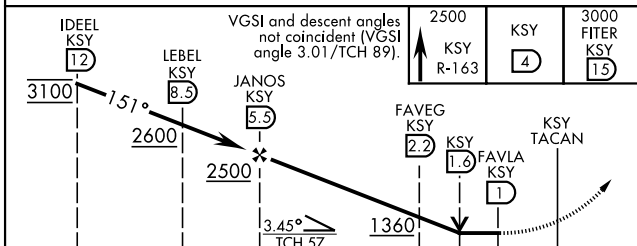


MISSED APPROACH: Climb on 2500 via KSY R-163 until 4 DME, then climb to 3000 to FITER/ 15 DME and hold.

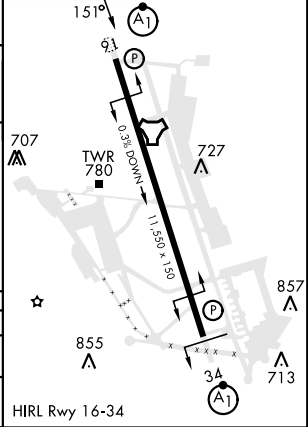
ATIS 120.45 273.5	SAN ANTONIO APP CON 118.05 353.5	TOWER 124.3 322.35	GND CON 121.8 289.4
----------------------	-------------------------------------	-----------------------	------------------------



EMERG SAFE ALT 100 NM 4200



ELEV 690	TDZE 690
----------	----------



CATEGORY	A	B	C	D	E
S-16 *	1100/24 410 (500-½)		1100/40 410 (500-¾)		
CIRCLING **	1200-1 510 (600-1)	1280-1 590 (600-1)	1340-1¾ 650 (700-1¾)	1900-3 1210 (1300-3)	

TACAN Y RWY 16

SC-3, 16 APR 2026 to 14 MAY 2026

SC-3, 16 APR 2026 to 14 MAY 2026