

# TACAN Y RWY 34

TACAN KSY Chan 57	APCH CRS 343°	Rwy Idg 11,550 TDZE 660 Arprt Elev 690
----------------------	------------------	--

[USAF]

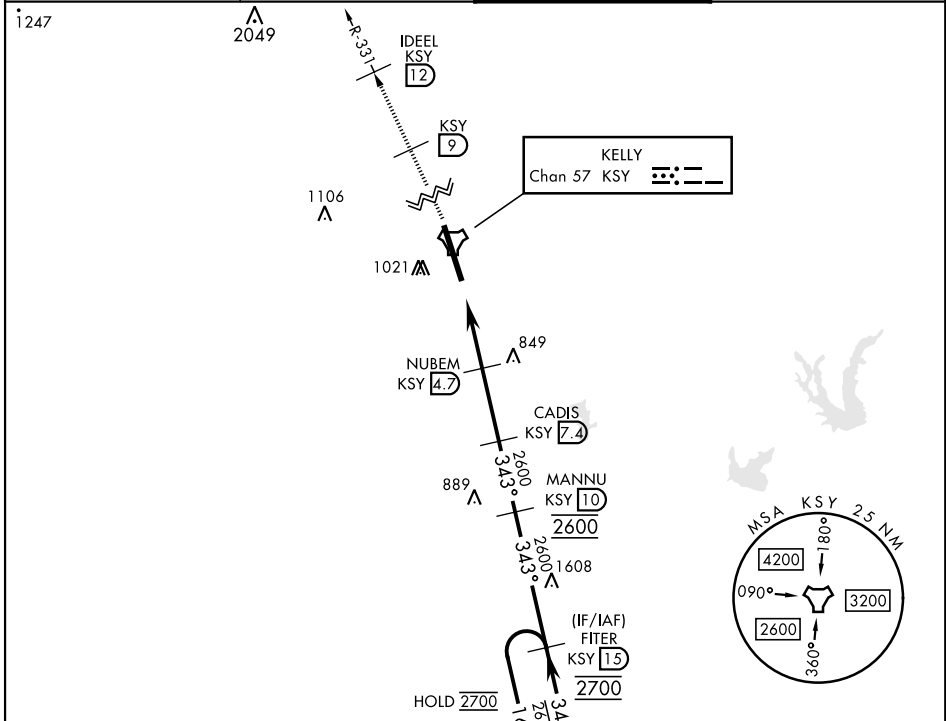
KELLY FLD (KSKF)

▼ \* When ALS inop, increase CAT AB RVR to 55 vis to 1 mile, CAT CDE vis to 1¼ miles.  
 \*\* Circling not authorized E of Rwy 16-34.

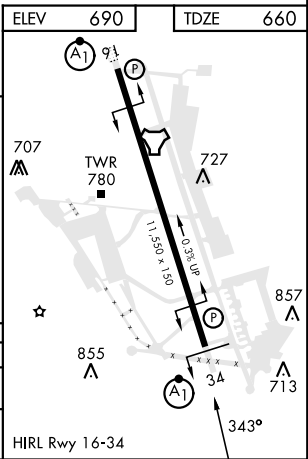
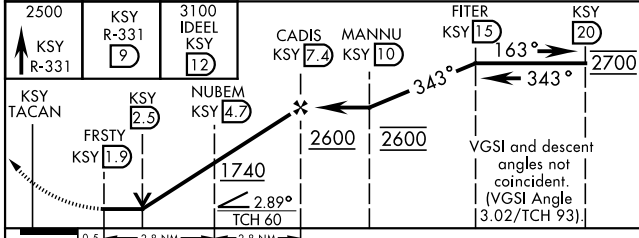


**MISSED APPROACH:** Climb to 2500 via KSY TACAN R-331 until 9 DME, cross 9 DME at 2500, then continue climb to 3100 to IDEEL/12 DME. Expect ATC instructions.

ATIS <b>120.45 273.5</b>	SAN ANTONIO APP CON <b>118.05 353.5</b>	TOWER <b>124.3 322.35</b>	GND CON <b>121.8 289.4</b>
-----------------------------	--	------------------------------	-------------------------------



ELEV 690	TDZE 660
----------	----------



CATEGORY	A	B	C	D	E
S-34 *	1100/24	440 (500-½)	1100/40	440	(500-¾)
CIRCLING **	1200-1 510 (600-1)	1280-1 590 (600-1)	1340-1¼ 650 (700-1¾)	1900-3 1210 (1300-3)	

# TACAN Y RWY 34

SC-3, 16 APR 2026 to 14 MAY 2026

SC-3, 16 APR 2026 to 14 MAY 2026