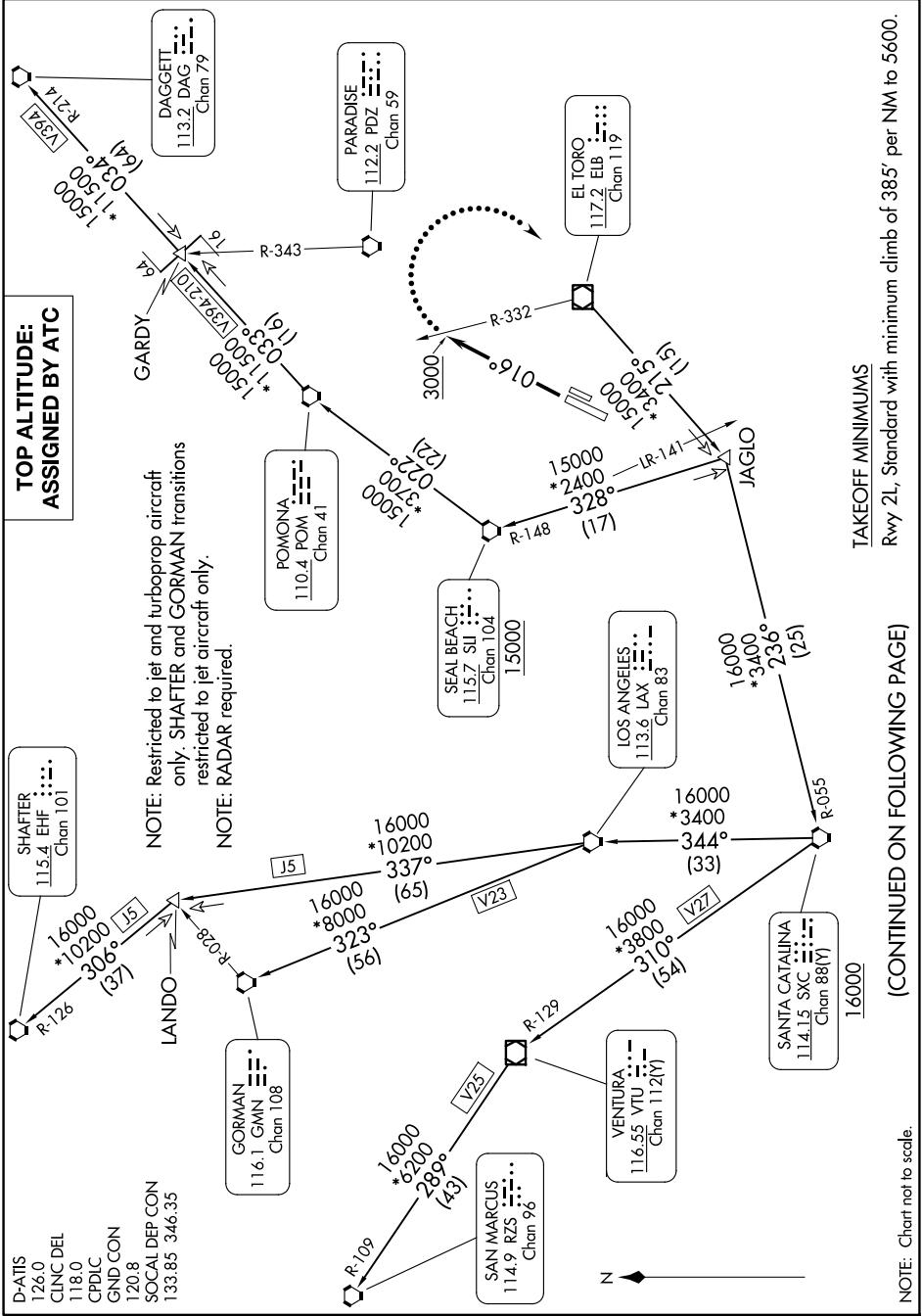


# IRVINE FIVE DEPARTURE

SW-3, 16 APR 2026 to 14 MAY 2026



TAKEOFF MINIMUMS  
Rwy 2L, Standard with minimum climb of 385' per NM to 5600.

(CONTINUED ON FOLLOWING PAGE)

NOTE: Chart not to scale.

SW-3, 16 APR 2026 to 14 MAY 2026