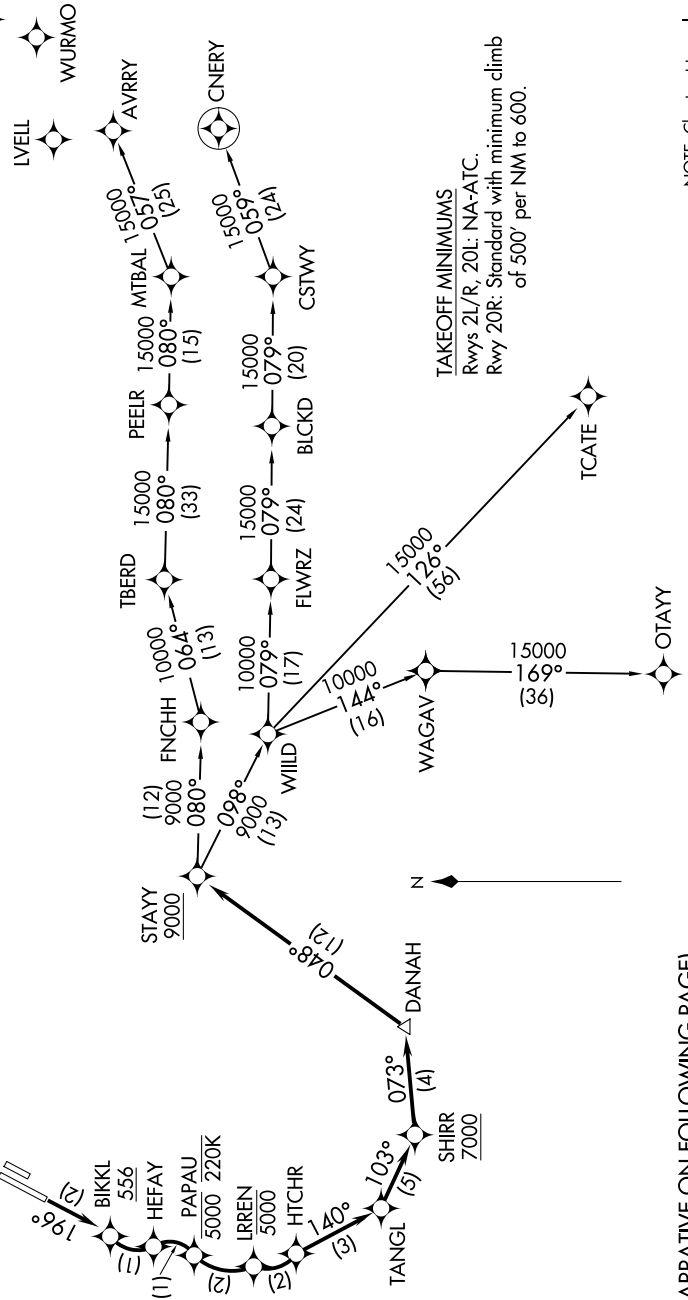


**TOP ALTITUDE:  
13000**

NOTE: RNP 1.  
 NOTE: RF required.  
 NOTE: GPS required.  
 NOTE: RADAR required.  
 NOTE: Turbojet only.  
 NOTE: Parachute jumping all hours, 14000 and below, north of route between STAYY and FNCHH.  
 NOTE: Do not file-To be assigned by ATC.

D-ATIS  
 126.0  
 CLNC DEL  
 118.0  
 CPDC  
 GND CON  
 120.8  
 JOHN WAYNE TOWER \*  
 126.8 343.625  
 SOCIAL DEP CON  
 128.1 281.4



**TAKEOFF MINIMUMS**  
 Rwy 2L/R, 20L: NA-ATC.  
 Rwy 20R: Standard with minimum climb of 500' per NM to 600.

NOTE: Chart not to scale.

(NARRATIVE ON FOLLOWING PAGE)

SW-3, 16 APR 2026 to 14 MAY 2026

SW-3, 16 APR 2026 to 14 MAY 2026