

WAAS CH 53306 W30A	APP CRS 306°	Rwy Ldg TDZE Apt Elev	8279 3952 3967
--	------------------------	-----------------------------	---

RNAV (GPS) RWY 30

SCOTTSLUFF/WESTERN NEBRASKA RGNL/WM B HEILIG FLD (B'F'F')

⚠ When local altimeter setting not received, use Alliance altimeter setting: increase LPV DA to 4293 feet and visibility 1/4 SM; increase LNAV/VNAV DA to 4392 feet and visibility 1/4 SM; increase all MDAs 100 feet and visibility Cats C and D 1/2 SM. For inoperative MALSR, when using Alliance altimeter setting, increase LPV all Cats visibility to 1 1/4. For uncompensated Baro-VNAV systems, LNAV/VNAV NA below -22°C (-7°F) or above 41°C (105°F). Baro-VNAV NA when using Alliance altimeter setting. VDP NA when using Alliance altimeter setting. DME/DME RNP-0.3 NA.



MISSED APPROACH: Climb to 6900 direct LEDSE and hold.

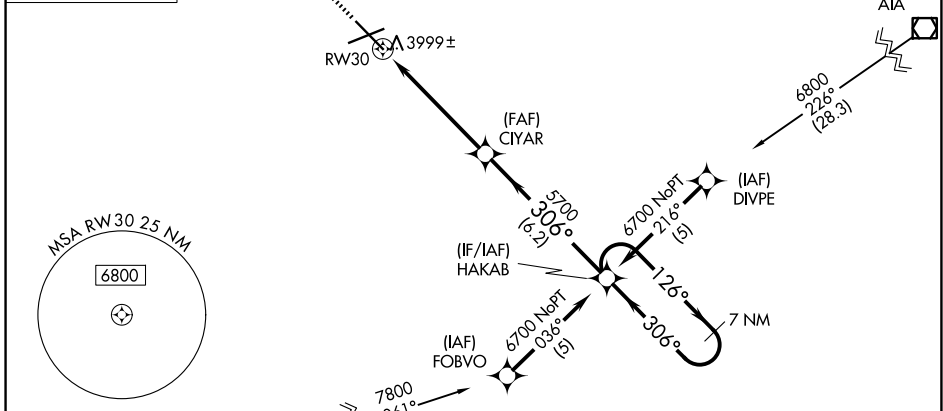
ASOS
121.025

DENVER CENTER
127.95 338.2

UNICOM
123.0 (CTAF) 0

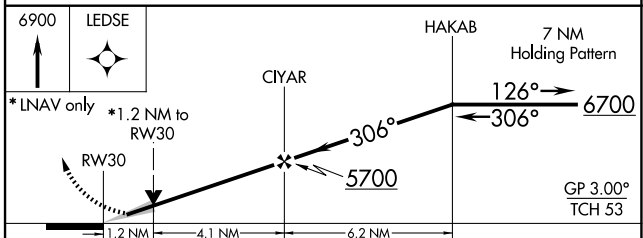
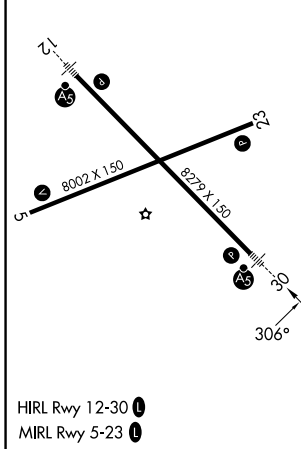


Procedure NA for arrivals at Alliance VOR/DME V100 northeast bound.



ELEV 3967 **D** TDZE 3952

ALBINO Procedure NA for arrivals at ALBINO V81 southwest bound and V6 westbound.



CATEGORY	A	B	C	D
LPV DA		4202-1/2	250 (300-1/2)	
LNAV/VNAV DA		4301-3/4	349 (400-3/4)	
LNAV MDA	4380-1/2	428 (500-1/2)	4380-3/4 428 (500-3/4)	4380-1 428 (500-1)
CIRCLING	4500-1	533 (600-1)	4560-1 1/2 593 (600-1 1/2)	4740-2 1/2 773 (800-2 1/2)

NC-2, 16 APR 2026 to 14 MAY 2026

NC-2, 16 APR 2026 to 14 MAY 2026