

VORTAC BFF 112.6 Chan 73	APP CRS 245°	Rwy Ldg TDZE Apt Elev	8002 3967 3967
--	------------------------	-----------------------------	---

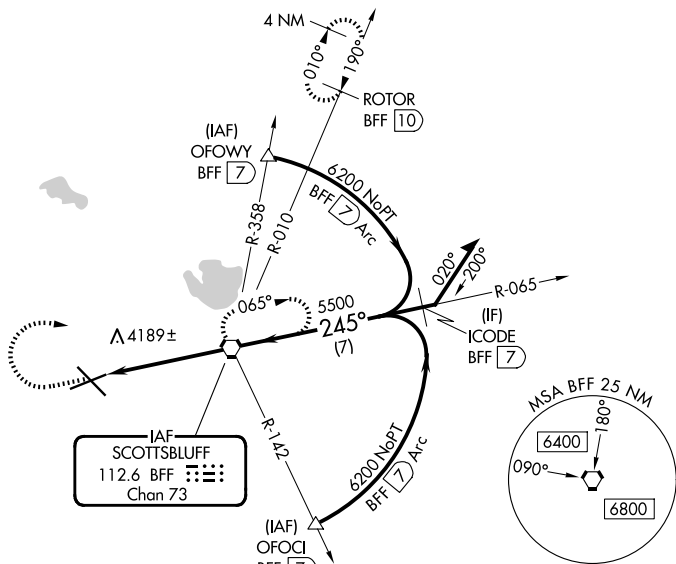
VOR or TACAN RWY 23

SCOTTSSLUFF/WESTERN NEBRASKA RGNL/WM B HEILIG FLD (BTF)

⚠ When local altimeter setting not received, use Alliance altimeter setting: increase all MDAs 100 feet and visibility Cats C and D ½ SM. VDP NA when using Alliance altimeter setting. Visibility reduction by helicopters NA.

MISSED APPROACH: Climb to 5000 then climbing right turn to 6500 direct BFF VORTAC and hold (TACAN aircraft continue climb to 7300 via BFF R-010 to ROTOR 10 DME and hold north, right turn 190° inbound).

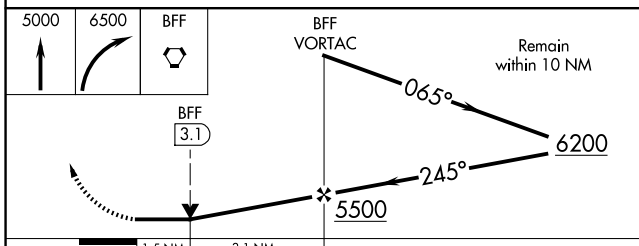
ASOS 121.025	DENVER CENTER 127.95 338.2	UNICOM 123.0 (CTAF) 0
------------------------	--------------------------------------	---------------------------------



NC-2, 16 APR 2026 to 14 MAY 2026

NC-2, 16 APR 2026 to 14 MAY 2026

ELEV 3967	D TDZE 3967
-----------	--------------------



HIRL Rwy 12-30 L	
MIRL Rwy 5-23 L	
FAF to MAP 4.7 NM	
Knots	60 90 120 150 180
Min:Sec	4:42 3:08 2:21 1:53 1:34

The runway layout diagram shows Runway 12-30 and Runway 5-23. Runway 12-30 is 8002 feet long with a bearing of 120°. Runway 5-23 is 8272 feet long with a bearing of 245°. The runways intersect at a 90-degree angle.