

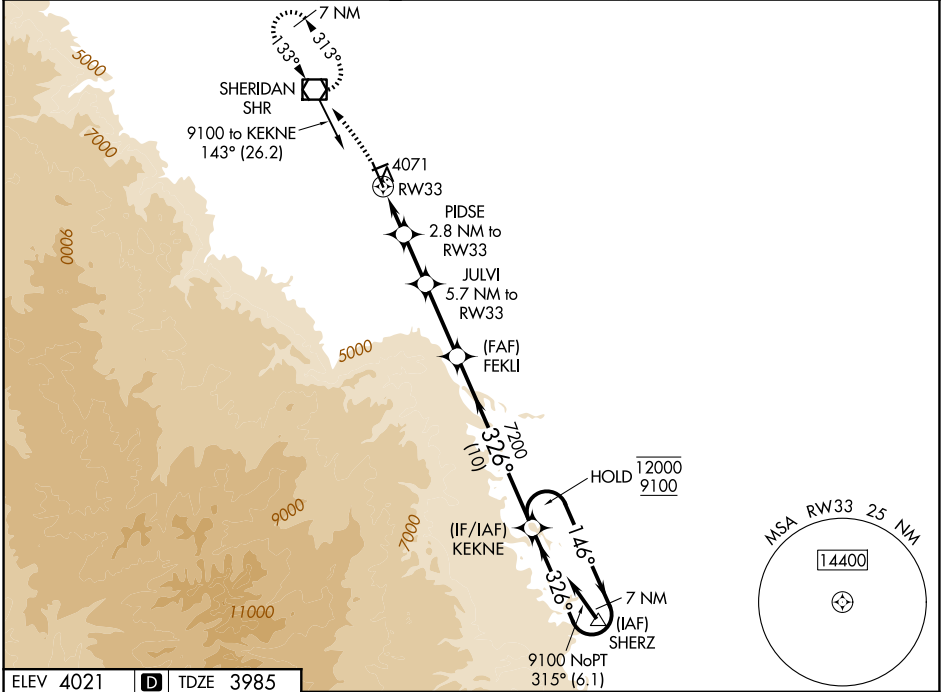
WAAS CH 65699 W33A	APP CRS 326°	Rwy Ldg TDZE Apt Elev	8301 3985 4021
--	------------------------	-----------------------------	---

RNAV (GPS) RWY 33

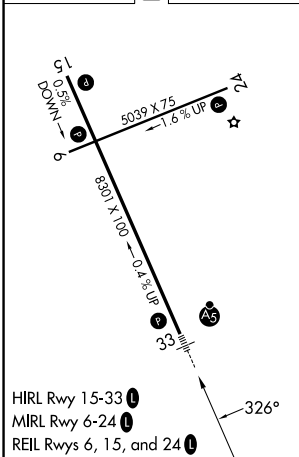
SHERIDAN COUNTY (SHR)

RNP APCH. MALSRS Circling to Rwy 24 NA at night. Baro-VNAV NA. When local altimeter setting not received, procedure NA. -18°C	MISSED APPROACH: Climbing left turn to 7300 direct SHR VOR/DME and hold, continue climb-in-hold to 7300.
---	--

ASOS 135.175	SALT LAKE CENTER 127.75 351.9	UNICOM 123.0 (CTAF)
------------------------	---	-------------------------------



ELEV 4021	D	TDZE 3985
-----------	----------	-----------



7300 SHR	PIDSE 2.8 NM to RW33	JULVI 5.7 NM to RW33	FEKLI 7200	KEKNE 7 NM Holding Pattern
*LNAV only	*1.1 NM to RW33	4920*	5840*	7200
1.1	1.7 NM	2.9 NM	4.3 NM	10 NM
12000	9100	7200	7200	7200
146°	326°	326°	326°	326°
GP 3.00°	TCH 55			
CATEGORY	A	B	C	D
LPV DA		4205-1/2	220 (200-1/2)	
LNAV/VNAV DA		4380-3/4	395 (400-3/4)	
LNAV MDA	4380-1/2	395 (400-1/2)	4380-5/8	395 (400-5/8)
CIRCLING	4600-1 579 (600-1)	4640-1 619 (700-1)	4860-2 1/2 839 (900-2 1/2)	5220-3 1199 (1200-3)