

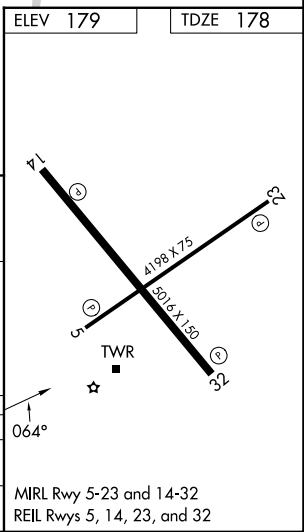
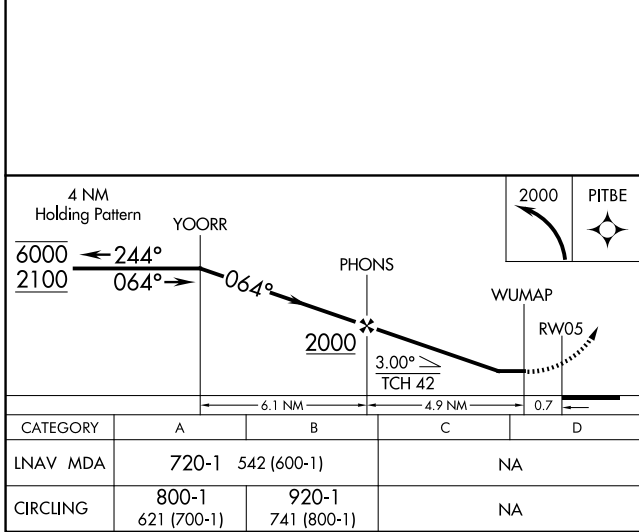
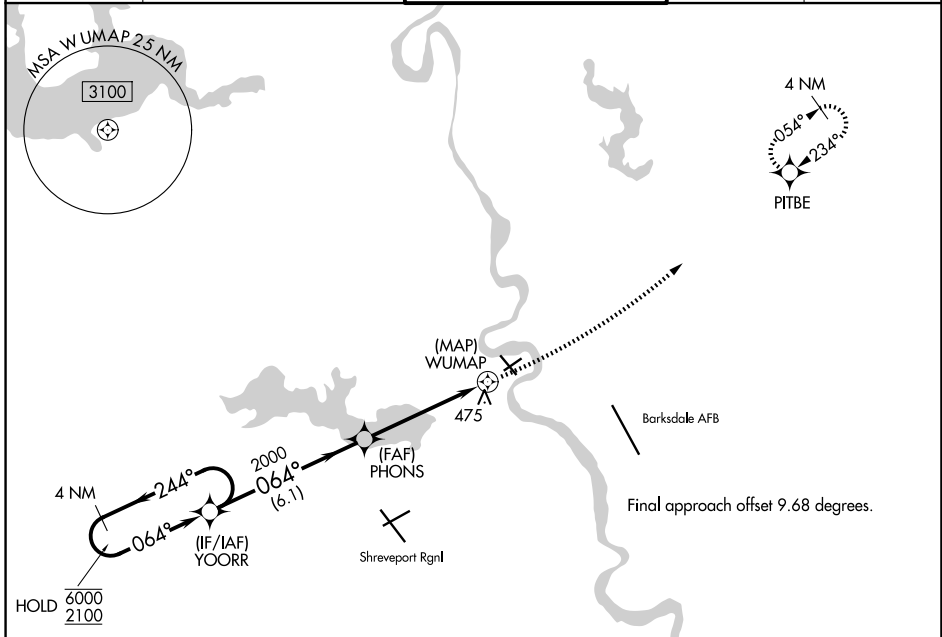
APP CRS	Rwy Ldg	<b>4198</b>
<b>064°</b>	TDZE	<b>178</b>
	Apt Elev	<b>179</b>

# RNAV (GPS) RWY 5

SHREVEPORT DOWNTOWN (DTN)

RNP APCH.	MISSED APPROACH: Climbing left turn to 2000 direct PITBE and hold.
<p><b>▼</b> Circling Rwy 23, 32 NA at night. Rwy 5 helicopter visibility reduction below 1 SM NA. Straight-in minimums NA at night.</p> <p><b>▲</b></p>	

ASOS	SHREVEPORT APP CON	DOWNTOWN TOWER ★	GND CON	UNICOM
<b>118.525</b>	<b>119.9 335.55</b> (153°-319°) <b>123.75 360.725</b> (320°-152°)	<b>120.225</b> (CTAF) <b>284.6</b>	<b>121.65</b>	<b>122.95</b>



MIRL Rwy 5-23 and 14-32  
REIL Rwys 5, 14, 23, and 32

SC-4, 16 APR 2026 to 14 MAY 2026

SC-4, 16 APR 2026 to 14 MAY 2026