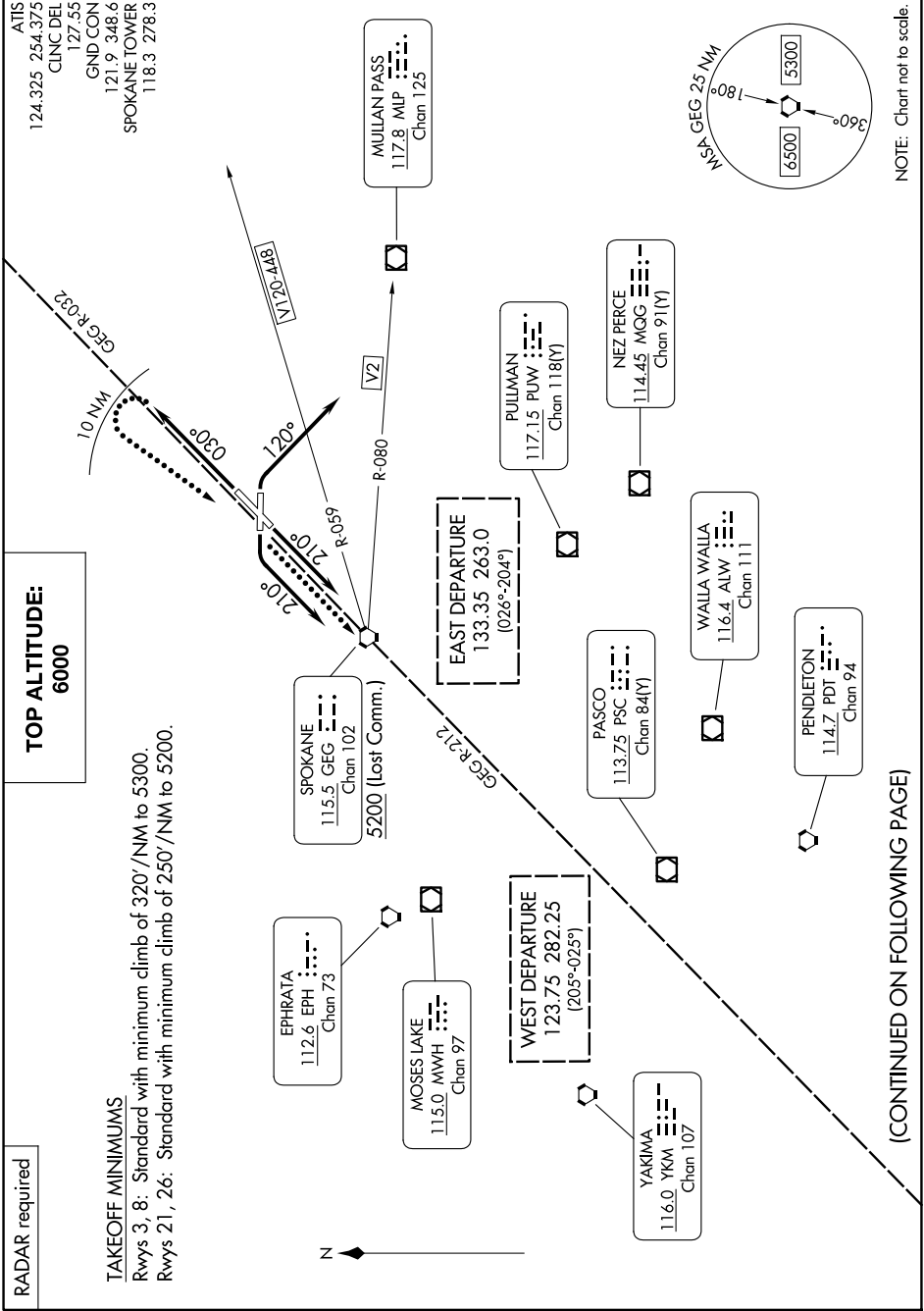


SPOKANE EIGHT DEPARTURE

AL-403 (FAA)

SPOKANE INTL (GEG)
SPOKANE, WASHINGTON

NW-1, 16 APR 2026 to 14 MAY 2026

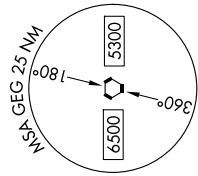


RADAR required

**TOP ALTITUDE:
6000**

TAKEOFF MINIMUMS
Rwys 3, 8: Standard with minimum climb of 320'/NM to 5300.
Rwys 21, 26: Standard with minimum climb of 250'/NM to 5200.

ATIS
124.325 254.375
CINC DEL
127.55
GND CON
121.9 348.6
SPOKANE TOWER
118.3 278.3



NOTE: Chart not to scale.

(CONTINUED ON FOLLOWING PAGE)

NW-1, 16 APR 2026 to 14 MAY 2026

SPOKANE EIGHT DEPARTURE

SPOKANE, WASHINGTON
SPOKANE INTL (GEG)