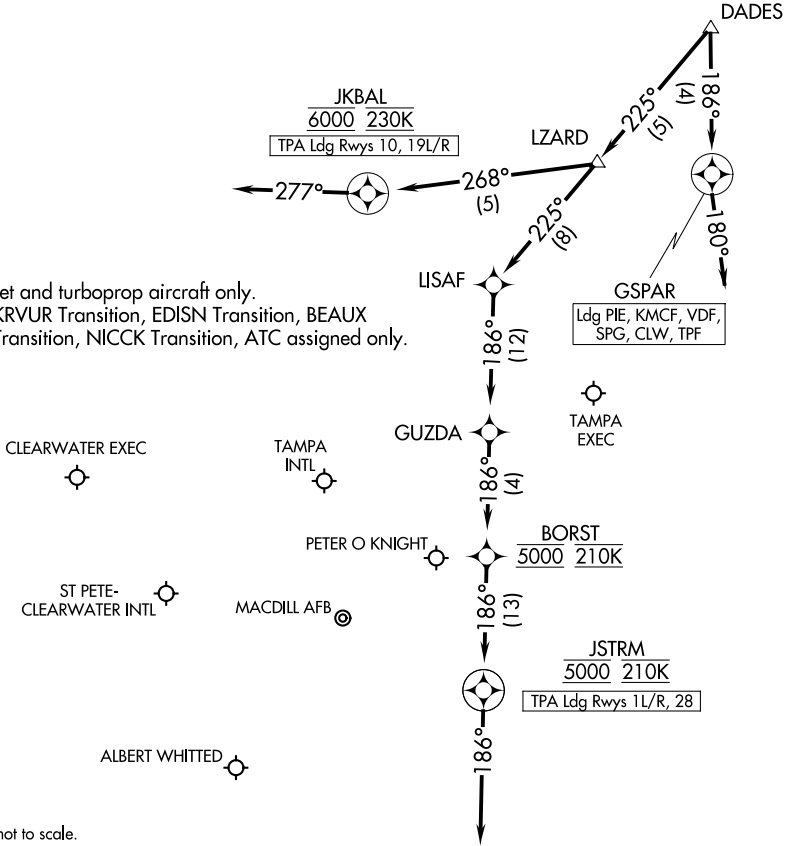


TAMPA APP CON  
135.5 279.6  
KMCF ATIS  
133.825 270.1  
PIE ATIS  
134.5  
TPA D-ATIS  
126.45

RNAV 1- DME/DME/IRU or GPS.

RADAR required.

NOTE: Jet and turboprop aircraft only.  
NOTE: KRVUR Transition, EDISN Transition, BEAUX Transition, NICCK Transition, ATC assigned only.



NOTE: Chart not to scale.

ARRIVAL ROUTE DESCRIPTION

**LANDING TPA RUNWAYS 1L/R, 28:** From DADES on track 225° to LZARD, then on track 225° to LISAF, then on track 186° to GUZDA, then on track 186° to cross BORST at 5000 and at 210K, then on track 186° to cross JSTRM at 5000 and at 210K, then on track 186°.  
Expect RADAR vectors to final approach course.

**LANDING TPA RUNWAYS 10, 19L/R:** From DADES on track 225° to LZARD, then on track 268° to cross JKBAL at 6000 and at 230K, then on track 277°.  
Expect RADAR vectors to final approach course.

**LANDING PIE/CLW/KMCF/SPG/TPF/VDF:** From DADES on track 186° to GSPAR, then on track 180°.  
Expect RADAR vectors to final approach course.