

TUCSON NINE DEPARTURE

AL-430 (FAA)

TUCSON INTL (TUS)
TUCSON, ARIZONA

TUCSON DEP CON
125.1 269.55
ATIS
123.8 279.65
CLNC DEL
126.65 326.2
GND CON
120.025 348.6
TUCSON TOWER
118.3 257.8

TOP ALTITUDE:
17000

DME required.

PHOENIX
115.6 PXR
Chan 103

BUCKEYE
110.6 BXX
Chan 43

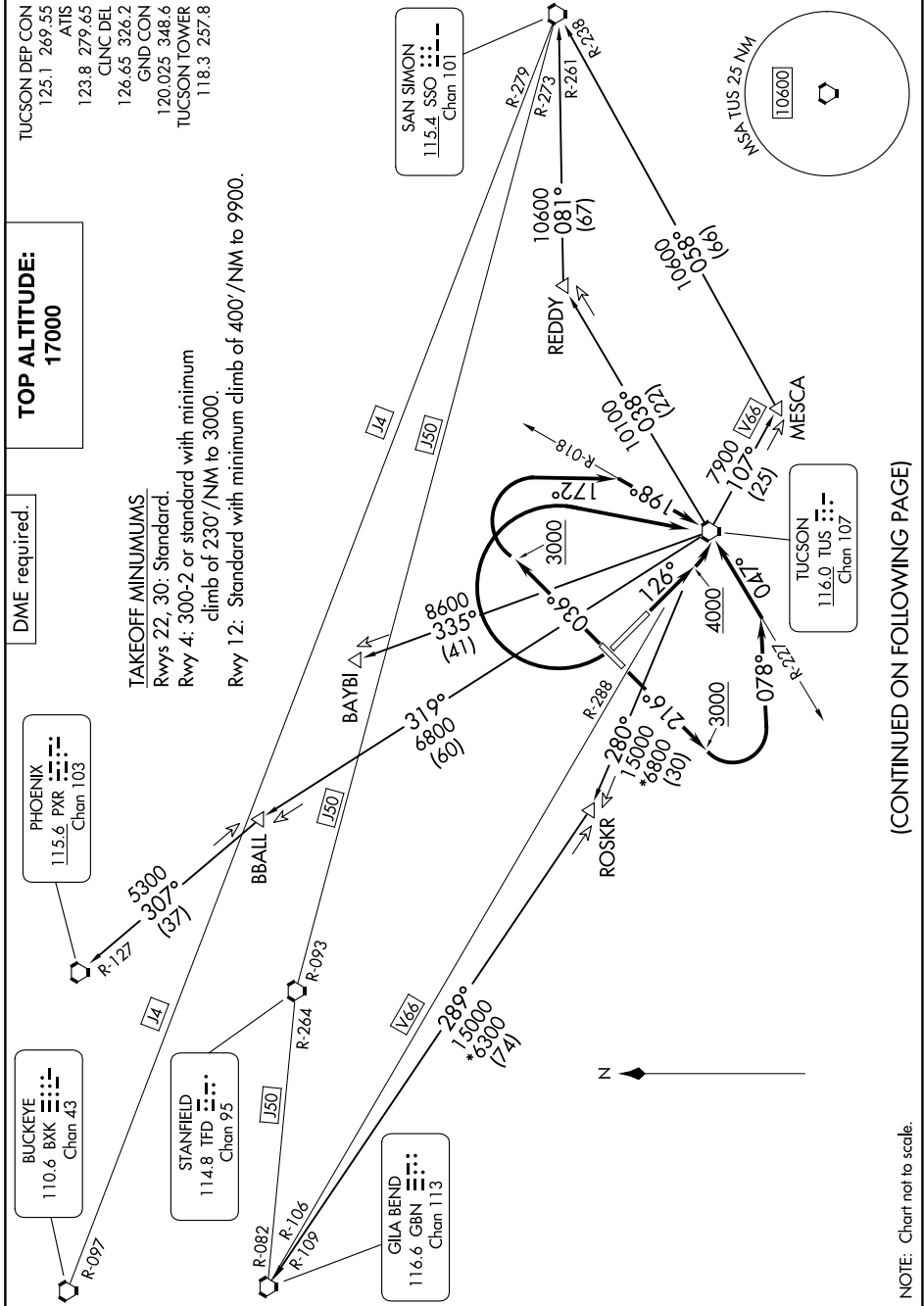
STANFIELD
114.8 TFD
Chan 95

GILA BEND
116.6 GBN
Chan 113

SAN SIMON
115.4 SSO
Chan 101

TUCSON
116.0 TUS
Chan 107

TAKEOFF MINIMUMS
Rwys 22, 30: Standard.
Rwy 4: 300-2 or standard with minimum
climb of 230'/NM to 3000.
Rwy 12: Standard with minimum climb of 400'/NM to 9900.



(CONTINUED ON FOLLOWING PAGE)

NOTE: Chart not to scale.