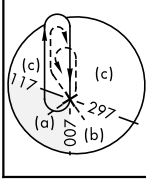
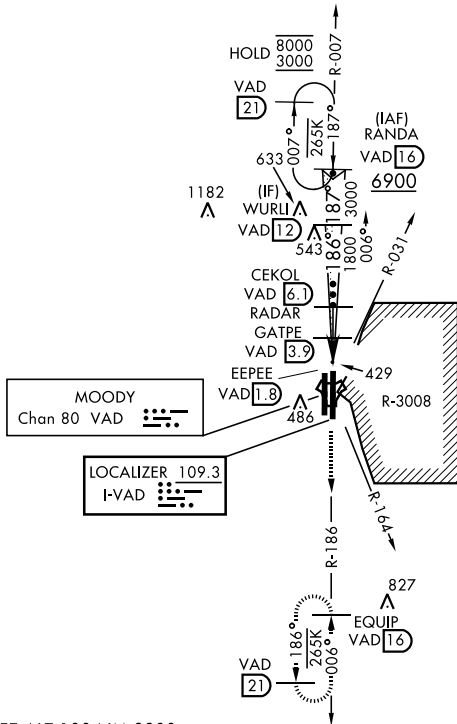


# HI-ILS Z or LOC Z RWY 19L

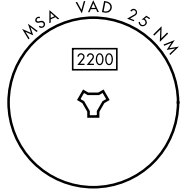
LOC I-VAD <b>109.3</b>	APCH CRS <b>186°</b>	Rwy Idg TDZE Arpt Elev <b>9300</b> <b>233</b> <b>233</b>	[USAF]	MOODY AFB (KVAD)
---------------------------	-------------------------	---	--------	------------------

RADAR or DME required	ALSF-1 (A1)	MISSED APPROACH: Climb to 3000 on VAD TACAN R-186 to EQUIP and hold.
-----------------------	----------------	--

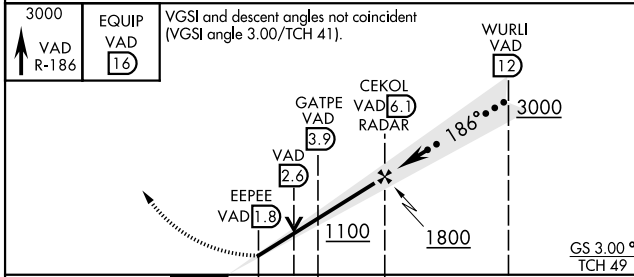
ATIS ★ <b>273.5</b>	VALDOSTA APP CON ★ <b>126.6 285.6</b>	TOWER ★ <b>128.45 (CTAF) 257.625</b>	GND CON <b>138.95 275.8</b>
------------------------	--	---	--------------------------------



CAUTION: Remain west of VAD R-031 and VAD R-164 when R-3008 is active.



**EMERG SAFE ALT 100 NM 3300**



ELEV	233	TDZE	233
HIRL all rwy			
FAF to MAP 4.3 NM			
Knots	120	140	160 180 200
Min:Sec	2:09	1:51	1:37 1:26 1:17

CATEGORY	C	D	E
S-ILS 19L *	433/24	200	(200-½)
S-LOC 19L **	680/45	447	(500-7/8)
CIRCLING	800-1½ 567 (600-1½)	800-2	567 (600-2)

# HI-ILS Z or LOC Z RWY 19L

SE-4, 16 APR 2026 to 14 MAY 2026

SE-4, 16 APR 2026 to 14 MAY 2026