

HI-TACAN Z RWY 19L

TACAN VAD Chan 80	APCH CRS 190°	Rwy Idg TDZE Arprt Elev	9300 233 233
-----------------------------	-------------------------	-------------------------------	---

[USAF]

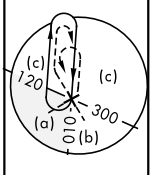
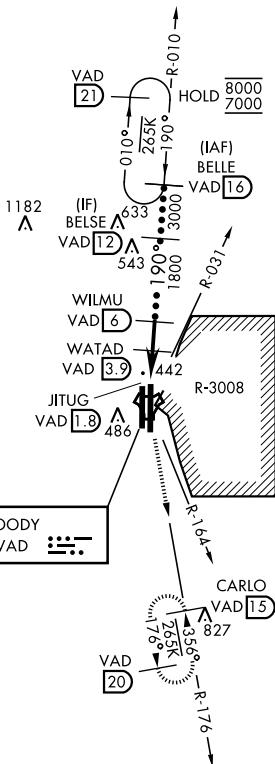
MOODY AFB (KVAD)

*When ALS inop, increase vis to 1 3/8 miles.

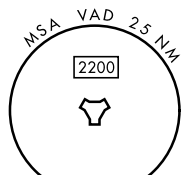
ALSF-1 (A1)

MISSED APPROACH: Climb to 3000 on VAD TACAN R-176 to CARLO and hold.

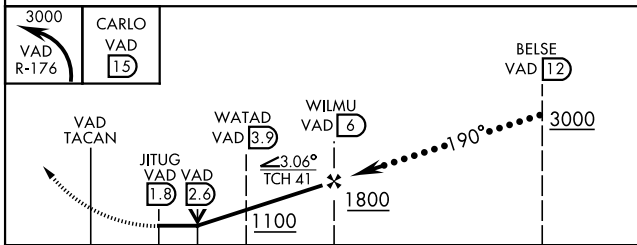
ATIS ★ 273.5	VALDOSTA APP CON ★ 126.6 285.6	TOWER ★ 128.45 (CTAF) 257.625	GND CON 138.95 275.8
------------------------	--	---	--------------------------------



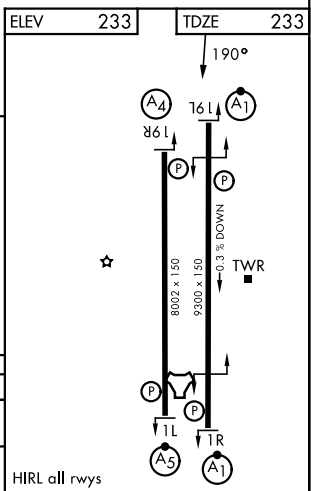
CAUTION: Remain west of VAD R-031 and VAD R-164 when R-3008 is active.



EMERG SAFE ALT 100 NM 3300



CATEGORY	C	D	E
S-19L *	700/50	467 (500-1)	
CIRCLING	800-1 1/2 567 (600-1 1/2)	800-2	567 (600-2)



HI-TACAN Z RWY 19L

SE-4, 16 APR 2026 to 14 MAY 2026

SE-4, 16 APR 2026 to 14 MAY 2026