

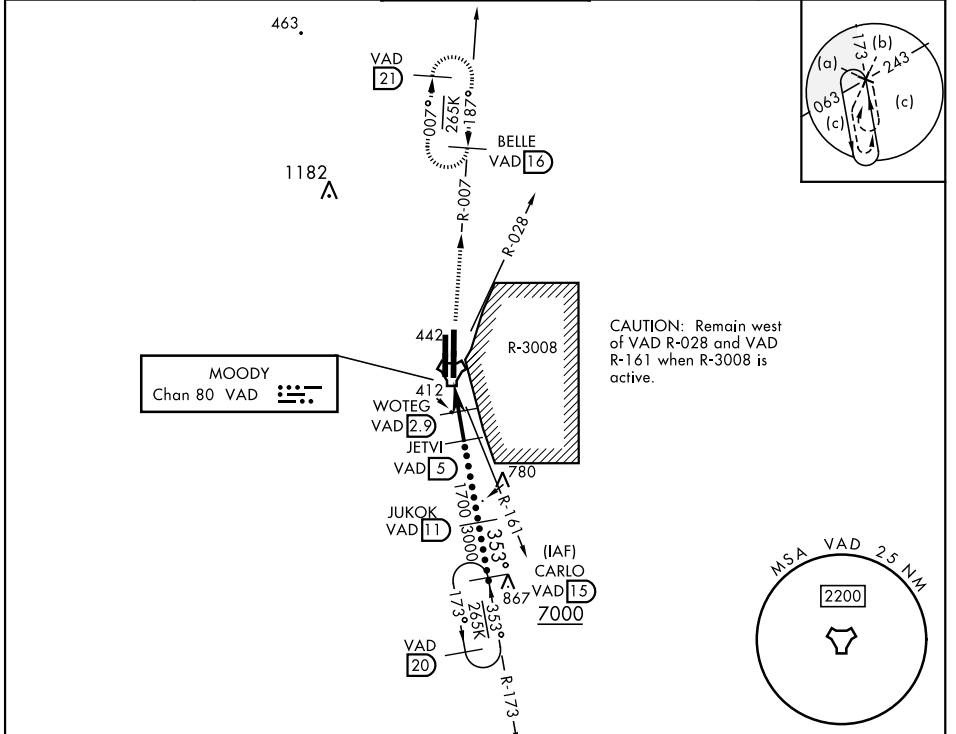
# HI-TACAN Z RWY 36R

TACAN VAD Chan <b>80</b>	APCH CRS <b>353°</b>	Rwy ldg TDZE Arprt Elev <b>9300</b> <b>217</b> <b>233</b>	[USAF]	MOODY AFB (KVAD)
-----------------------------	-------------------------	--	--------	------------------

V \* When ALS inop, increase vis to 1 3/4 miles.
 
 ALSF-1  
A1

 MISSED APPROACH: Climb to 3000 on VAD TACAN R-007 to BELLE and hold.

ATIS ★ <b>273.5</b>	VALDOSTA APP CON <b>126.6 285.6</b>	TOWER★ <b>128.45 (CTAF) 257.625</b>	GND CON <b>138.95 275.8</b>	CLNC DEL <b>120.625 296.7</b>
------------------------	--	--	--------------------------------	----------------------------------



SE-4, 16 APR 2026 to 14 MAY 2026

SE-4, 16 APR 2026 to 14 MAY 2026

ELEV 233		TDZE 217	
EMERG SAFE ALT 100 NM 3300			
3000 VAD R-007 BELLE VAD 16 CARLO R-173 7000 JUKOK 11 JETVI 5 WOTEG 2.9 TACAN JIDMI 0.7 BELLE 16 1700 1040 3000 7000 353° 2.85° TCH 54			
CATEGORY	C	D	E
S-36R *	680/50	463 (500-1)	
CIRCLING	760-1 1/2 527 (600-1 1/2)	800-2 567 (600-2)	
HIRL all rwys			

# HI-TACAN Z RWY 36R