

VALDOSTA, GEORGIA

RNAV (GPS) RWY 19R

APCH CRS 186°	Rwy Idg TDZE Arprt Elev	8002 231 233
-------------------------	-------------------------------	-----------------------------------------

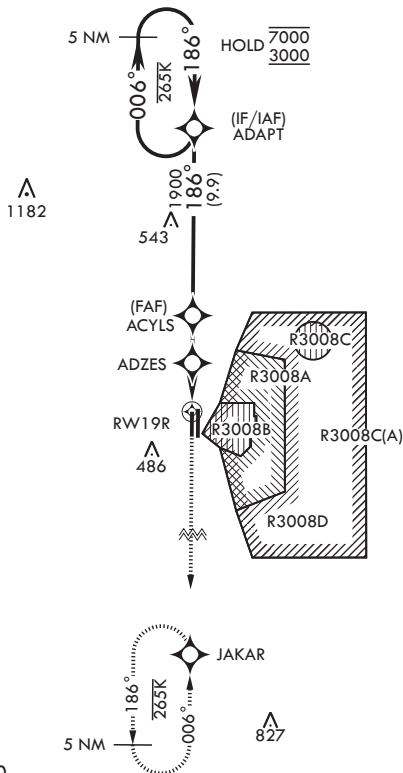
(USAF)

MOODY AFB (KVAD)

RNP APCH-GPS	MALS A4	MISSED APPROACH: Climb to 3000 direct JAKAR and hold.
<p>▼ * When ALS inop, increase CAT AB RVR to 55, vis to 1 mile; CAT CDE vis to 1 3/8 miles.</p>		

ATIS* 273.5	VALDOSTA APP CON* 126.6 285.6	TOWER* 128.45 (CTAF) 257.625	GND CON 138.95 275.8
-----------------------	-----------------------------------------	----------------------------------------	--------------------------------

Rwy 19R helicopter visibility reduction below RVR 40 not authorized.



EMERG SAFE ALT 100 NM 3300

3000 ↑ JAKAR	ADAPT					ELEV 233	5 NM Holding Pattern	TDZE 231
ACYLS	ADZES	1900	7000	3000				
RWY 19R		1.3 NM to RWY 19R	1100	≤ 3.00° TCH 50				
2.6 NM		2.5 NM						
CATEGORY	A	B	C	D	E			
LNAV MDA*	700/40	469 (500-¾)	700/50	469	(500-1)			
CIRCLING	760-1	527 (600-1)	800-1½ 567 (600-1½)	800-2	567 (600-2)			
						HIRL all rwys		

VALDOSTA, GEORGIA

30°58'N - 83°12'W

MOODY AFB (KVAD)

Orig 27NOV25

RNAV (GPS) RWY 19R

SE-4, 16 APR 2026 to 14 MAY 2026

SE-4, 16 APR 2026 to 14 MAY 2026