

VALDOSTA, GEORGIA

# RNAV (GPS) RWY 1R

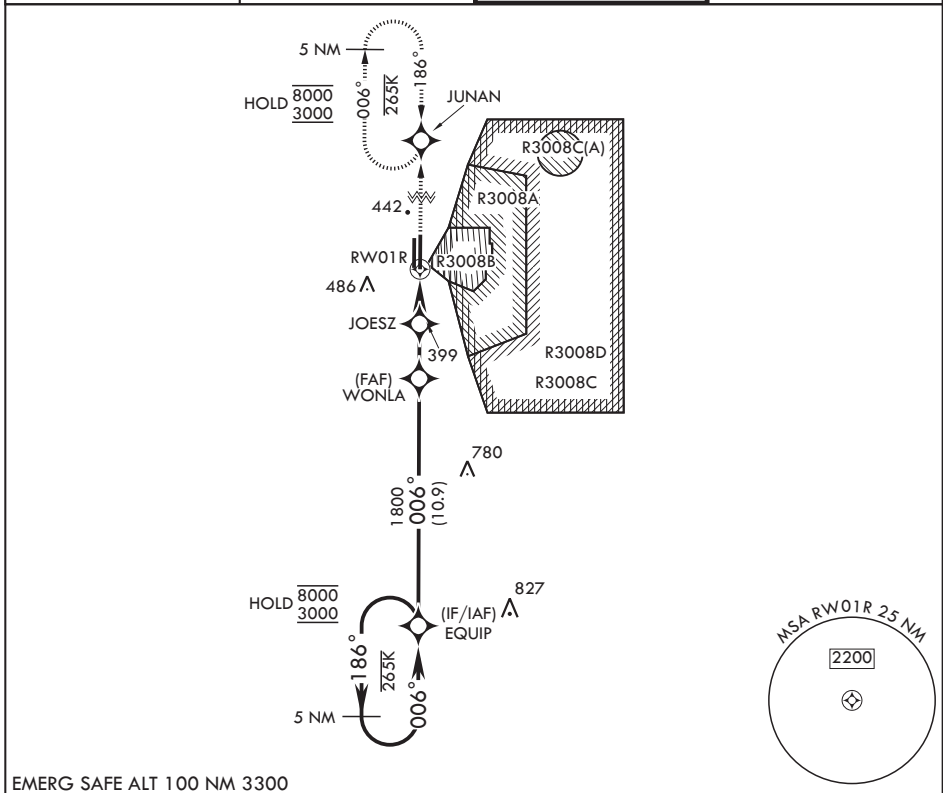
APCH CRS <b>006°</b>	Rwy Idg TDZE Arpft Elev	<b>9300</b> <b>217</b> <b>233</b>
-------------------------	-------------------------------	---

(USAF)

MOODY AFB (KVAD)

RNP APCH-GPS	ALSF-1	MISSED APPROACH: Climb to 3000 direct to JUNAN and hold.
--------------	--------	--

ATIS* <b>273.5</b>	VALDOSTA APP CON* <b>126.6 285.6</b>	TOWER* <b>128.45 (CTAF) 257.625</b>	GND CON <b>138.95 275.8</b>
-----------------------	---	--	--------------------------------



EMERG SAFE ALT 100 NM 3300

5 NM Holding Pattern	EQUIP	3000 JUNAN	ELEV 233	TDZE 217	
8000 ← 186°	→ 006°	↑	⊙		
3000	WONLA				
	JOESZ				
	1800				
	1000				
	3.00° TCH 54				
	1.3 NM to RW01R				
	2.4 NM				
CATEGORY	A	B	C	D	E
LNAV MDA*	660/24	443 (500-½)	660/45	443	(500-¾)
CIRCLING	760-1	527 (600-1)	800-1½	567 (600-1½)	800-2 567 (600-2)
HIRL all rwys					BCN

VALDOSTA, GEORGIA  
Orig 27NOV25

30°58'N - 83°12'W

MOODY AFB (KVAD)

# RNAV (GPS) RWY 1R

SE-4, 16 APR 2026 to 14 MAY 2026

SE-4, 16 APR 2026 to 14 MAY 2026