

# TACAN Y RWY 1R

TACAN VAD Chan <b>80</b>	APCH CRS <b>356°</b>	Rwy ldg TDZE Arprt Elev <b>9300</b> <b>217</b> <b>233</b>
-----------------------------	-------------------------	--

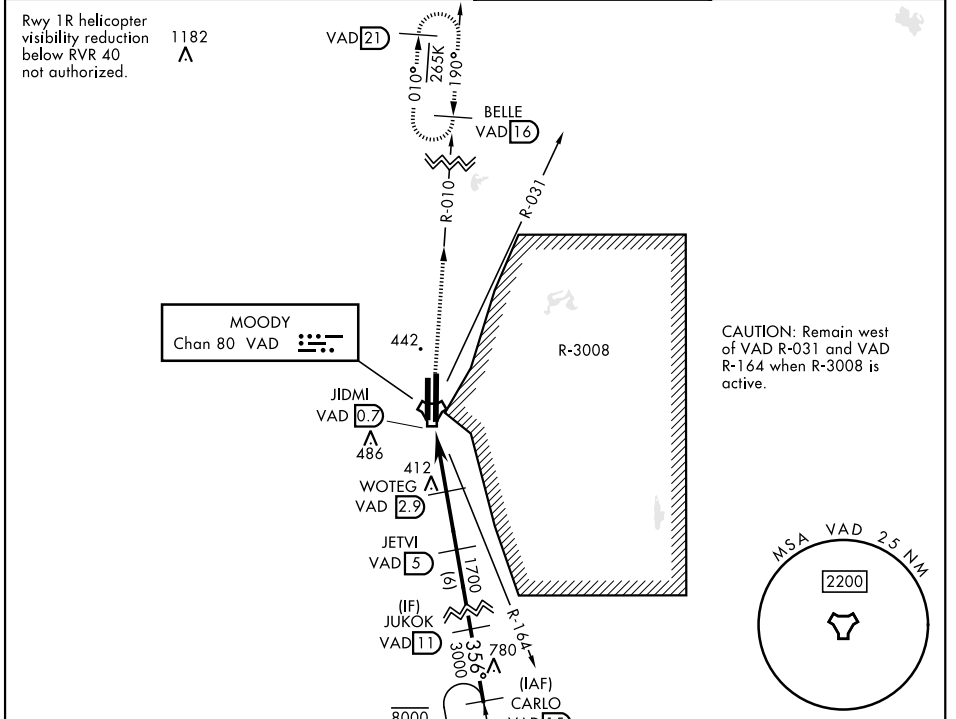
[USAF]

MOODY AFB (KVAD)

▼ \*When ALS inop, increase CAT AB RVR to 55 and vis to 1 mile, CAT CDE vis to 1 1/8 miles.

ALSF-1  MISSED APPROACH: Climb to 3000 on VAD TACAN R-010 to BELLE and hold.

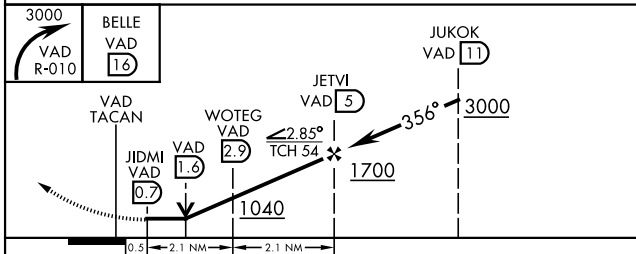
ATIS ★ <b>273.5</b>	VALDOSTA APP CON ★ <b>126.6 285.6</b>	TOWER ★ <b>128.45 (CTAF) 257.625</b>	GND CON <b>138.95 275.8</b>
------------------------	--	---	--------------------------------



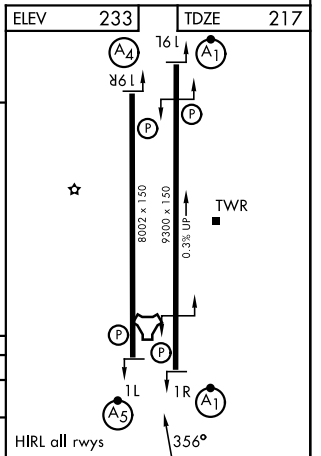
SE-4, 16 APR 2026 to 14 MAY 2026

SE-4, 16 APR 2026 to 14 MAY 2026

EMERG SAFE ALT 100 NM 3300



CATEGORY	A	B	C	D	E
S-1R*	680/40	463 (500-3/4)	680/50	463	(500-1)
CIRCLING	760-1	527 (600-1)	800-1 1/2 567 (600-1 1/2)	800-2	567 (600-2)



# TACAN Y RWY 1R