

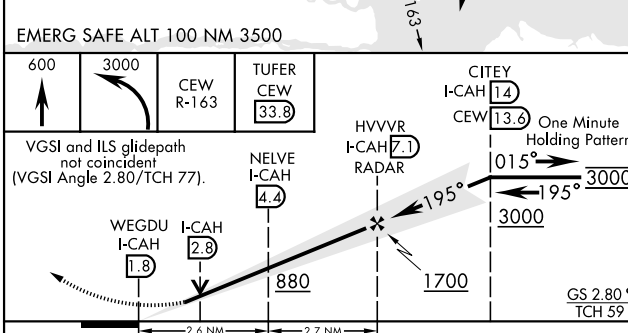
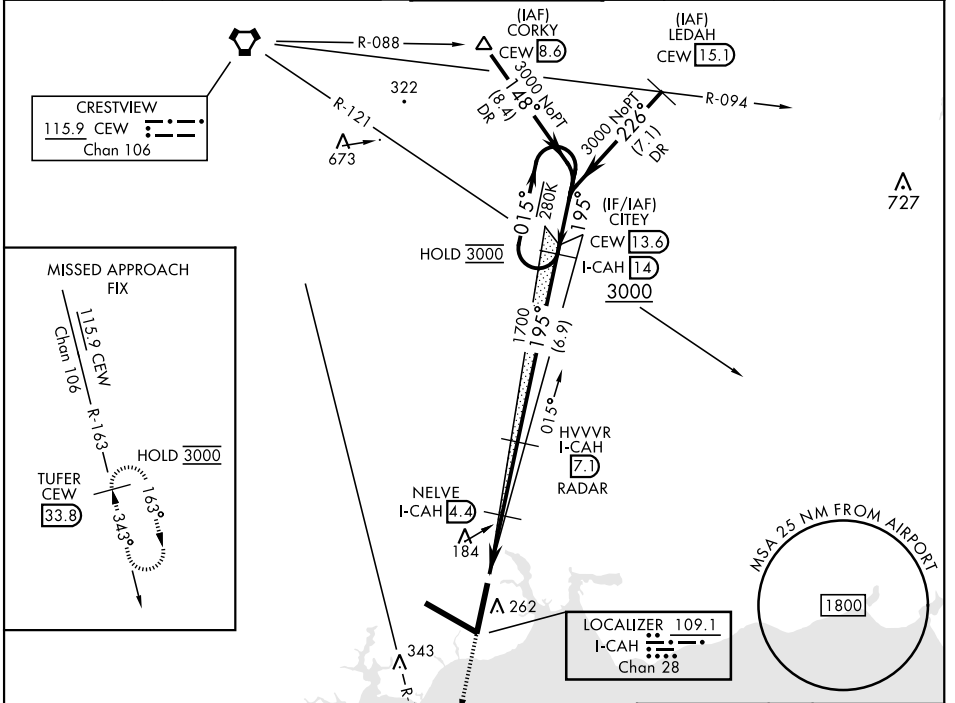
VALPARAISO DESTIN FT WALTON BEACH, FLORIDA

ILS or LOC Z RWY 20

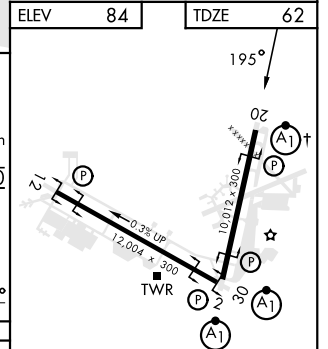
LOC/DME I-CAH 109.1 Chan 28	APCH CRS 195°	Rwy Idg TDZE Arpt Elev	10,012 62 84
---	-------------------------	------------------------------	---

[USAF] EGLIN AFB DESTIN FORT WALTON BEACH (KVP5)

DME required		ALSF-1 	MISSED APPROACH: Climb to 600, then climbing left turn to 3000 on CEW VORTAC R-163 to TUFER/33.8 DME and hold.			
* When ALS inop increase RVR to 40, vis to 3/4 mile. ** When ALS inop increase RVR to 55, vis to 1 mile.		ATIS ★ 134.625 273.5	APP CON 125.1 281.45 271°-089° 132.1 360.6 090°-270°	TOWER 118.2 353.65	GND CON 121.8 335.8	CLNC DEL 127.7 377.2



EMERG SAFE ALT 100 NM 3500				
600	3000	CEW R-163	TUFER CEW 33.8	
VGSI and ILS glidepath not coincident (VGSI Angle 2.80/TCH 77).				
WEGDU I-CAH 1.8	I-CAH 2.8	NELVE I-CAH 4.4	HVVVR I-CAH 7.1 RADAR	CITEY I-CAH 14 CEW 13.6 One Minute Holding Pattern
2.6 NM		2.7 NM		GS 2.80° TCH 59
CATEGORY	A	B	C	D
S-ILS 20 *	262/24		200	(200-1/2)
S-LOC 20 **	440/24	378 (400-1/2)	440/35	378 (400-3/4)
Ⓢ CIRCLING	600-1	516 (600-1)	680-1 1/2 596 (600-1 1/2)	680-2 596 (600-2)
			700-2 1/4 616 (700-2 1/4)	



ELEV	84	TDZE	62
† Rwy 20 apch lgt 1500' nonstandard. HIRL all rwys			
FAF to MAP 5.3 NM			
Knots	60	90	120
Min:Sec	5:18	3:32	2:39
		2:07	1:46

VALPARAISO DESTIN FT WALTON BEACH, FLORIDA
Orig 16MAY24

EGLIN AFB DESTIN FORT WALTON BEACH (KVP5)
30°29'N-86°32'W

ILS or LOC Z RWY 20

SE-3, 16 APR 2026 to 14 MAY 2026

SE-3, 16 APR 2026 to 14 MAY 2026