

VALPARAISO DESTIN FT WALTON BEACH, FLORIDA

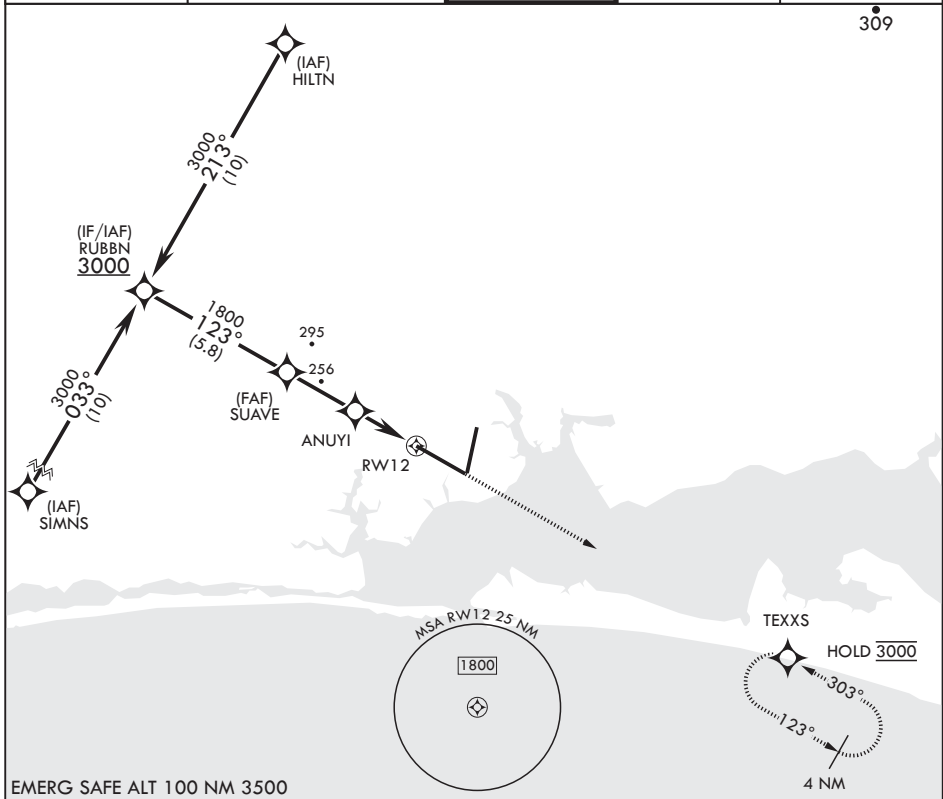
RNAV (GPS) RWY 12

- (USAF) EGLIN AFB DESTIN FORT WALTON BEACH (KVPS)

APCH CRS	Rwy Idg	12,004
123°	TDZE	84
	Arprt Elev	84

RNP APCH - GPS MISSED APPROACH: Climb to 3000 direct TEXXS and hold.

ATIS* 134.625 273.5	APP CON/DEP CON 125.1 281.45 271°-089° 132.1 360.6 090°-270°	TOWER 118.2 353.65	GND CON 121.8 335.8	CLNC DEL 127.7 377.2
------------------------	--	-----------------------	------------------------	-------------------------



RUBBN		SUAVE		ANUYI		RWY 12	
3000	123°	1800	920	1.2 NM to RWY 12			
		3.00° ≥ TCH 50					
		2.8 NM		2.5 NM			
ELEV 84		TDZE 84					
CATEGORY	A	B	C	D	E		
LNAV MDA	520/55	436 (500-1)	520-1¼	436	(500-1¼)		
CIRCLING	600-1	516 (600-1)	680-1½ 596 (600-1½)	680-2 596 (600-2)	700-2¼ 616 (700-2¼)		
						HIRL all Rwys † Rwy 20 apch lgt 1500' nonstandard.	

SE-3, 16 APR 2026 to 14 MAY 2026

SE-3, 16 APR 2026 to 14 MAY 2026

VALPARAISO DESTIN FT WALTON BEACH, FLORIDA

EGLIN AFB DESTIN FORT WALTON BEACH (KVPS)

Orig 16MAY24

30°29'N - 86°32'W

RNAV (GPS) RWY 12