

RNAV (GPS) RWY 2

APCH CRS 015°	Rwy ldg 10,012 TDZE 59 Arpt Elev 84
-------------------------	--

[USAF] EGLIN AFB DESTIN FORT WALTON BEACH (KVPS)

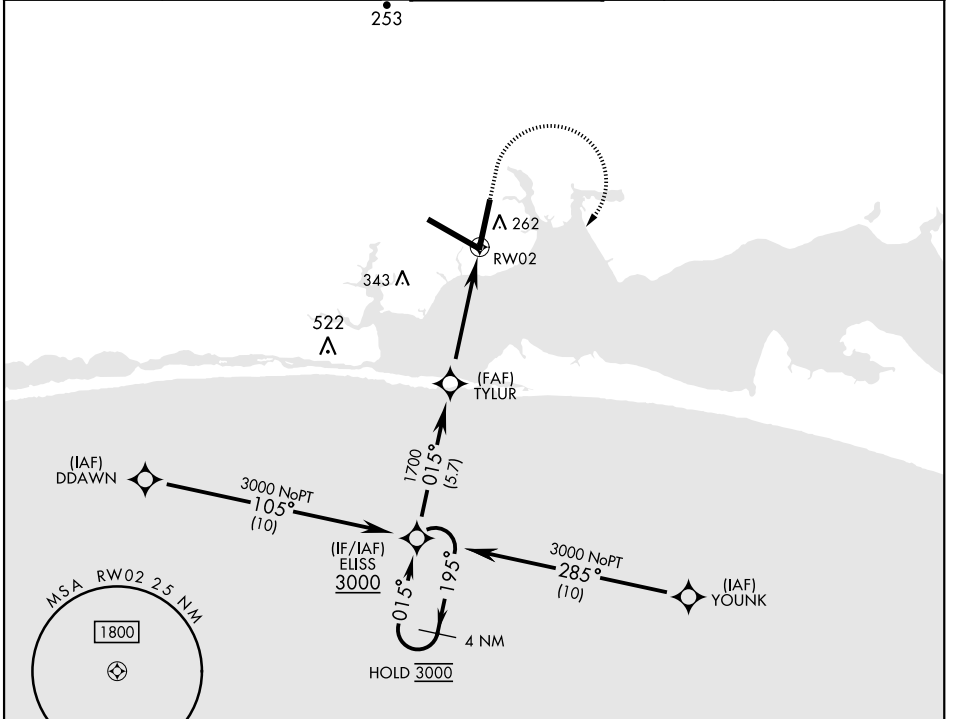
RNP APCH- GPS

* When ALS inop, increase CAT AB RVR to 55 and vis to 1 mile, CAT CDE RVR to 60, vis to 1 1/8 miles.

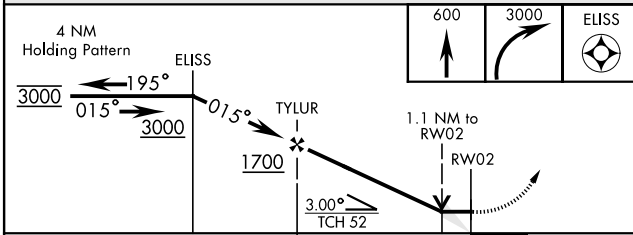
ALSIF-1

MISSED APPROACH: Climb to 600, then climbing right turn to 3000 direct ELISS and hold.

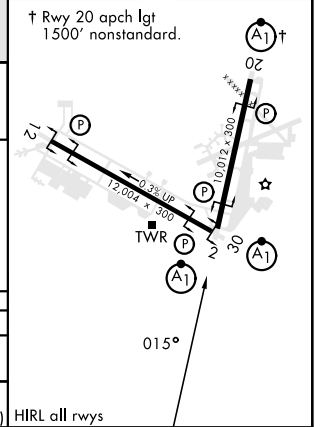
ATIS ★ 134.625 273.5	APP CON 125.1 281.45 271°-089° 132.1 360.6 090°-270°	TOWER 118.2 353.65	GND CON 121.8 335.8	CLNC DEL 127.7 377.2
--------------------------------	--	------------------------------	-------------------------------	--------------------------------



EMERG SAFE ALT 100 NM 3500



ELEV 84	TDZE 59
----------------	----------------



CATEGORY	A	B	C	D	E
LNAV MDA*	460/24	401 (400-34)	460/40	401 (400-34)	
CIRCLING	600-1	516 (600-1)	680-1 1/2 596 (600-1 1/2)	680-2 596 (600-2)	700-2 1/4 616 (700-2 1/4)

HIRL all rwys

RNAV (GPS) RWY 2

SE-3, 16 APR 2026 to 14 MAY 2026

SE-3, 16 APR 2026 to 14 MAY 2026