

RNAV (GPS) RWY 20

[USAF] EGLIN AFB DESTIN FORT WALTON BEACH (KVPS)

APCH CRS	Rwy ldg	10.012
195°	TDZE	62
	Arprt Elev	84

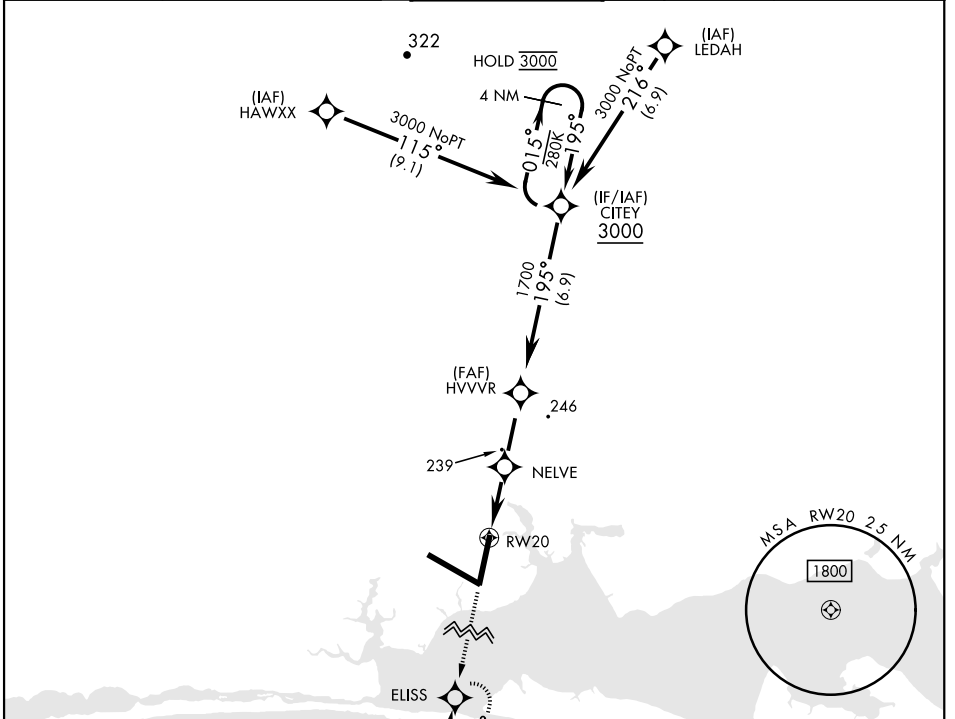
RNP APCH - GPS

* When ALS inop increase CAT AB RVR to 55, vis to 1 mile;
CAT CDE vis to 1 3/8 miles.

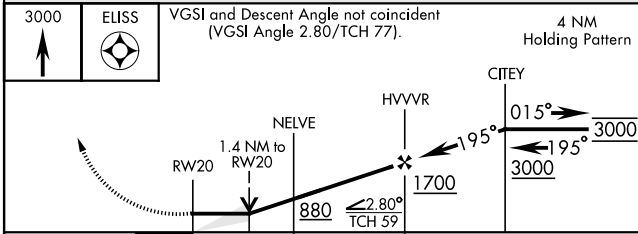


MISSED APPROACH: Climb to 3000 direct ELISS and hold.

ATIS ★	APP CON	TOWER	GND CON	CLNC DEL
134.625 273.5	125.1 281.45 271° - 089° 132.1 360.6 090° - 270°	118.2 353.65	121.8 335.8	127.7 377.2

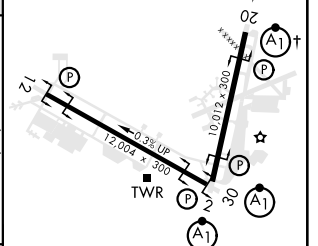


EMERG SAFE ALT 100 NM 3500



ELEV	84	TDZE	62
------	----	------	----

† Rwy 20 apch lgt 1500' nonstandard.



CATEGORY	A	B	C	D	E
LNAV MDA *	540/24	478 (500-1/2)	540/50	478	(500-1)
CIRCLING	600-1	516 (600-1)	680-1 1/2 596 (600-1 1/2)	680-2 596 (600-2)	700-2 1/4 616 (700-2 1/4)

HIRL all rwys

RNAV (GPS) RWY 20

SE-3, 16 APR 2026 to 14 MAY 2026

SE-3, 16 APR 2026 to 14 MAY 2026