

TACAN Y RWY 33

TACAN WRB Chan 10	APCH CRS 327°	Rwy ldg 12,001 TDZE 275 Arprt Elev 294
-----------------------------	-------------------------	-------------------------------------------------------------------

[USAF]

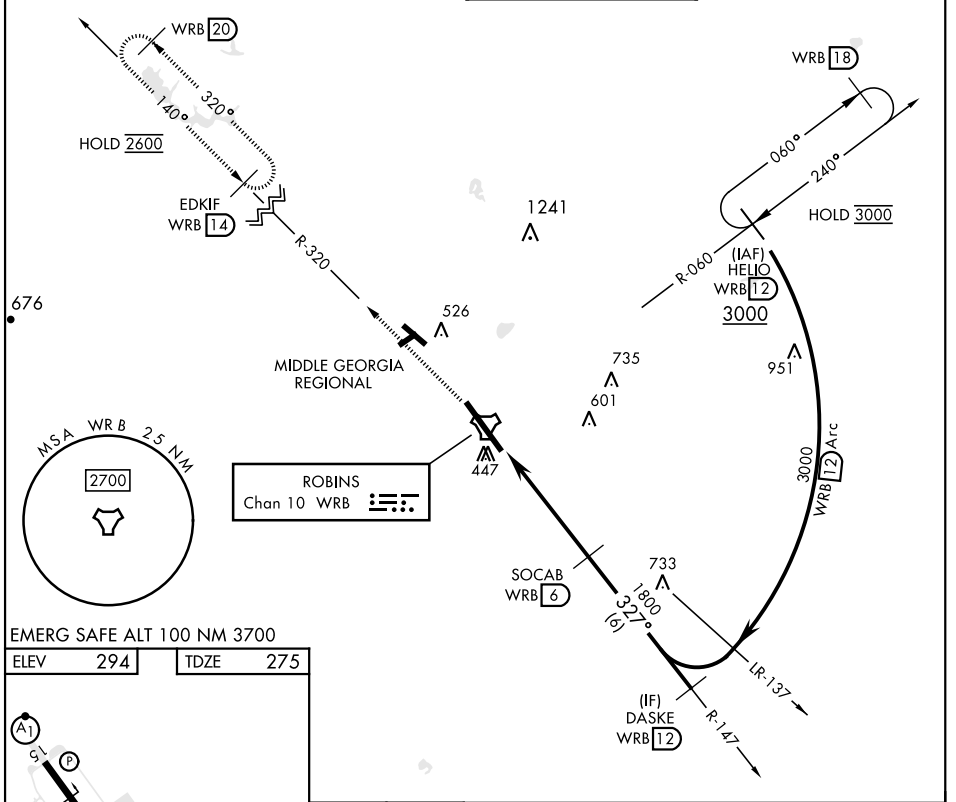
ROBINS AFB (KWRB)

* When ALS inop, increase CAT AB RVR to 55, vis to 1 mile; CAT CDE vis to 1 3/8 miles.
 ** Circling not authorized SW of Rwy 15-33.



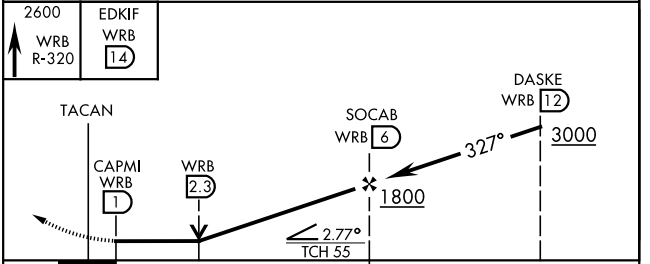
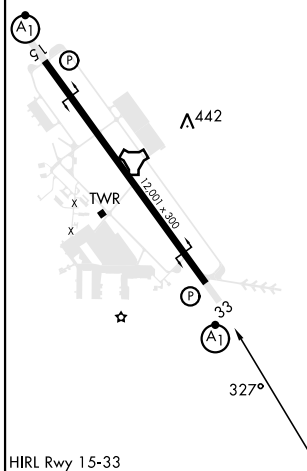
MISSED APPROACH: Climb To 2600 on WRB TACAN R-320 to EDKIF and hold.

ATIS 119.475 273.475	ATLANTA APP CON 124.2 279.6	TOWER 133.225 257.975	GND CON 121.85 275.8
--------------------------------	---------------------------------------	---------------------------------	--------------------------------



EMERG SAFE ALT 100 NM 3700

ELEV	294	TDZE	275
------	-----	------	-----



CATEGORY	A	B	C	D	E
S-33*	720/24	445 (500-1/2)	720/45	445	(500-3/8)
C CIRCLING**	780-1	486 (500-1)	880-1 1/2 586 (600-1 1/2)	960-2 666 (700-2)	1040-2 3/4 746 (800-2 3/4)

TACAN Y RWY 33

SE-4, 16 APR 2026 to 14 MAY 2026

SE-4, 16 APR 2026 to 14 MAY 2026