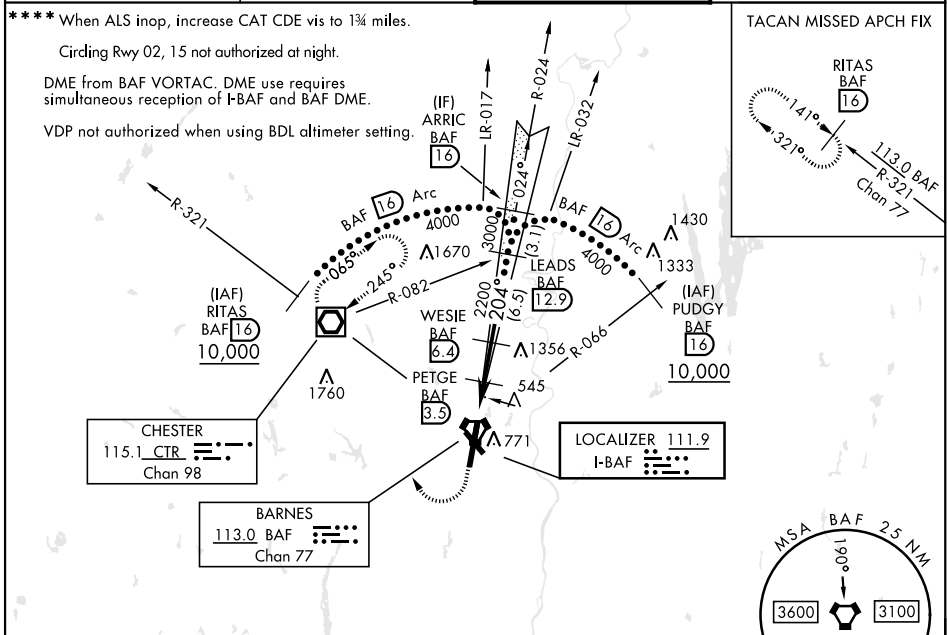


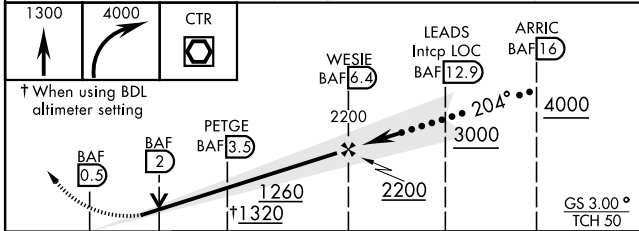
# HI-ILS or LOC RWY 20

LOC I-BAF <b>111.9</b>	APCH CRS <b>204°</b>	Rwy Idg TDZE Arpt Elev <b>8919</b> <b>270</b> <b>270</b>	[USAF]	WESTFIELD-BARNES RGNL (KBAF)
DME required **When ALS inop, increase CAT CDE RVR 40. **When ALS inop, increase CAT CDE vis to 1½ miles. ***When ALS inop, increase CAT CDE RVR 45.			MALSR A5	MISSED APPROACH: Climb to 1300, then climbing right turn to 4000 direct CTR VOR/DME and hold, continue climb-in-hold to 4000. (TACAN actv climb to 1300, then climbing right turn to 4000 via hdg 010° and BAF VORTAC R-321 to RITAS/BAF 16 DME and hold).

ATIS <b>127.1 263.15</b>	BRADLEY APP CON <b>125.35 281.5</b>	WESTFIELD TOWER ★ <b>125.075 (CTAF) 0 251.1</b>	GND CON <b>121.7 289.4</b>
-----------------------------	--	--	-------------------------------



EMERG SAFE ALT 100 NM 6500



CATEGORY	C	D	E
S-ILS 20 *	520/24	250	(300-½)
S-LOC 20 **	800/55	530	(600-1)
CIRCLING	1160-2¾ 890 (900-2¾)	1660-3	1390 (1400-3)
BRADLEY INTL ALTIMETER			
S-ILS 20 ***	564/24	294	(300-½)
S-LOC 20 ****	860-1¼	590	(600-1¼)
CIRCLING	1220-2¾ 950 (1000-2¾)	1720-3	1450 (1500-3)

ELEV 270	TDZE 270
HIRL Rwy 2-20 MIRL Rwy 15-33 REIL Rwy 15	
FAF to MAP 5.9 NM	
Knots	120 140 160 180 200
Min:Sec	2:57 2:32 2:13 1:58 1:46

# HI-ILS or LOC RWY 20

NE-1, 16 APR 2026 to 14 MAY 2026

NE-1, 16 APR 2026 to 14 MAY 2026