

VORTAC BAF 113.0 Chan 77	APCH CRS 208°	Rwy ldg TDZE 270 Arpt Elev 270
--	-------------------------	--

[USAF]

WESTFIELD-BARNES RGNL (KBAF)

DME required

▼ * When ALS inop, increase CAT CDE vis to 1½ miles.
** When ALS inop, increase CAT CDE vis to 1% miles.

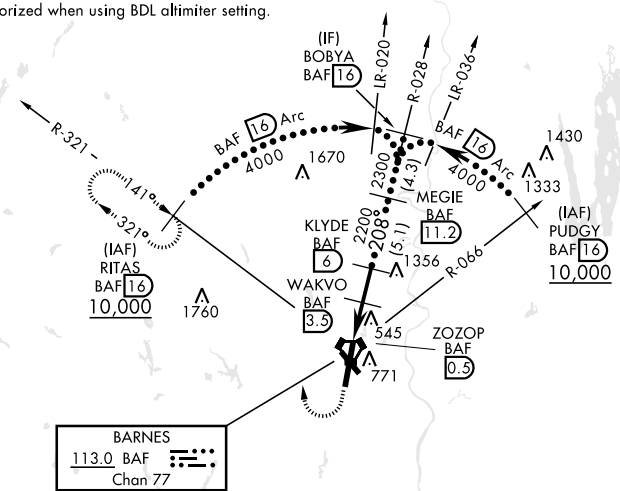
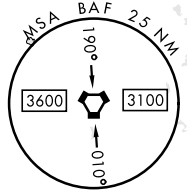


MISSED APPROACH: Climb to 1400, then climbing right turn to 4000 via hdg 010° and BAF VORTAC R-321 to RITAS/16.0 DME and hold.

ATIS 127.1 263.15	BRADLEY APP CON 125.35 281.5	WESTFIELD TOWER ★ 125.075 (CTAF) 0 251.1	GND CON 121.7 289.4
-----------------------------	--	--	-------------------------------

When lcl altimeter setting not received, use Bradley Intl altimeter setting.
Circling Rwy 15 not authorized at night.
• 3491

When VGSI inop, circling to Rwy 15, 33 not authorized at night.
VDP not authorized when using BDL altimeter setting.

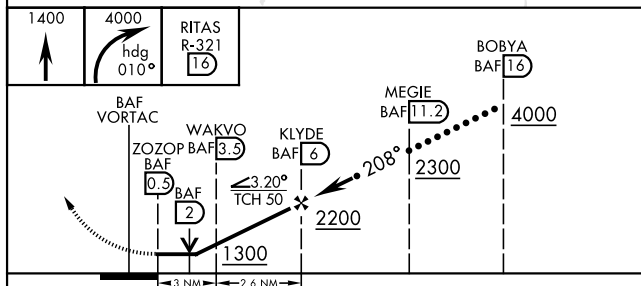


BARNES
113.0 BAF
Chan 77

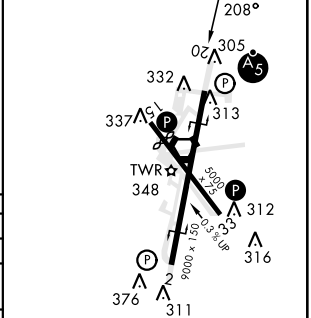
NE-1, 16 APR 2026 to 14 MAY 2026

NE-1, 16 APR 2026 to 14 MAY 2026

EMERG SAFE ALT 100 NM 6500



ELEV 270	TDZE 270
----------	----------



CATEGORY	C	D	E
S-20*	800/55	530	(600-1¼)
CIRCLING	1160-2¾ 890 (900-2¾)	1660-3	1390 (1400-3)
BRADLEY INTL ALTIMETER			
S-20**	860-1¼	590	(600-1¼)
CIRCLING	1200-2¾ 950 (1000-2¾)	1720-3	1450 (1500-3)

HIRL Rwy 2-20
MIRL Rwy 15-33
REIL Rwy 15