

LOC I-BAF <b>111.9</b>	APP CRS <b>204°</b>	Rwy Ldg TDZE Apt Elev	<b>8919</b> <b>270</b> <b>270</b>
---------------------------	------------------------	-----------------------------	---

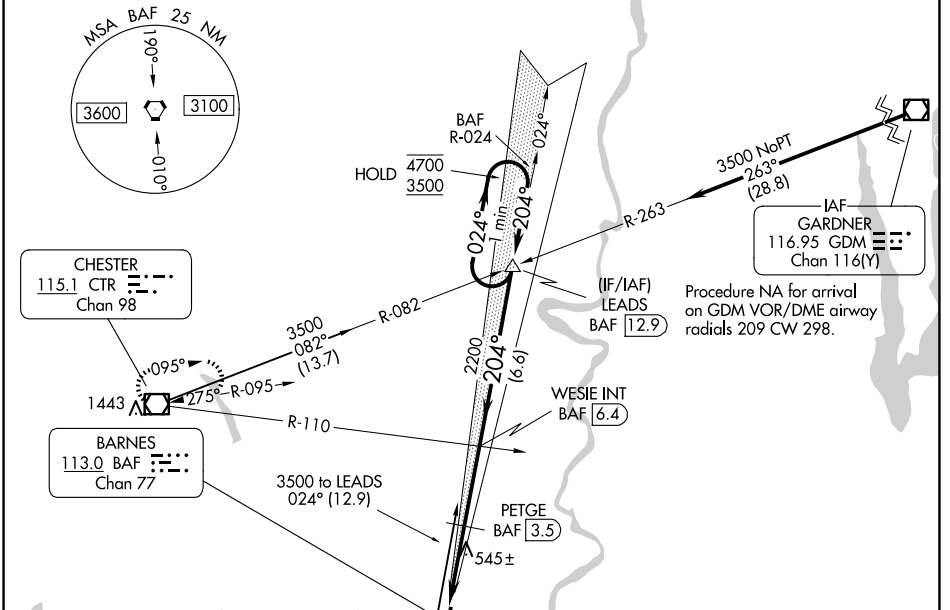
**ILS or LOC RWY 20**  
WESTFIELD-BARNES RGNL (BAF)

**⚠** Circling Rwy 15 NA at night. DME from BAF VORTAC. DME use requires simultaneous reception of I-BAF and BAF DME. For inop ALS, increase S-ILS 20 Cat E visibility to RVR 4000; increase S-LOC 20 Cat E visibility to 3 SM; increase PETGE fix minimums S-LOC 20 Cat E visibility to 1 1/2 SM.

**⚠** -20°C

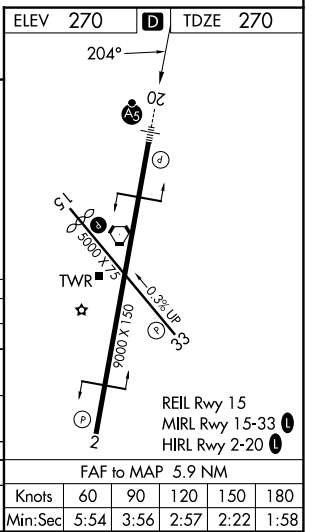
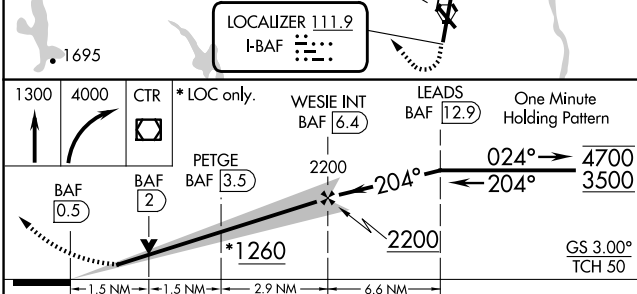
**MALSR** MISSED APPROACH: Climb to 1300 then climbing right turn to 4000 direct CTR VOR/DME and hold, continue climb-in-hold to 4000.

ATIS <b>127.1 263.15</b>	BRADLEY APP CON <b>125.35 281.5</b>	WESTFIELD TOWER ★ <b>125.075 (CTAF) 0 251.1</b>	GND CON <b>121.7 289.4</b>
-----------------------------	--	--	-------------------------------



NE-1, 16 APR 2026 to 14 MAY 2026

NE-1, 16 APR 2026 to 14 MAY 2026



CATEGORY	A	B	C	D	E
S-ILS 20	520/24		250 (300-1/2)		
S-LOC 20	1260/40 990 (1000-3/4)	1260/55 990 (1000-1)	1260-2 1/2 990 (1000-2 1/2)		
CIRCLING	1260-1 1/4 990 (1000-1 1/4)	1260-1 1/2 990 (1000-1 1/2)	1260-3 990 (1000-3)	1660-3 1390 (1400-3)	
PETGE FIX MINIMUMS (DME REQUIRED)					
S-LOC 20	800/24	530 (600-1/2)	800/55	530 (600-1)	
CIRCLING	1160-1 1/4	890 (900-1 1/4)	1160-2 3/4 890 (900-2 3/4)	1660-3 1390 (1400-3)	

F knots	60	90	120	150	180
Min:Sec	5:54	3:56	2:57	2:22	1:58