

(THUMB1.THUMB) 26022

AL-446 (FAA)

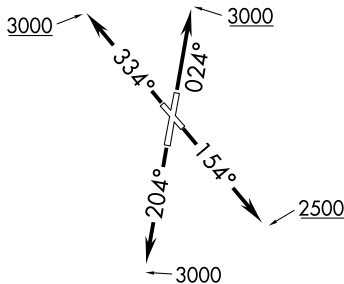
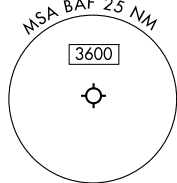
WESTFIELD-BARNES RGNL (BAF)  
WESTFIELD/SPRINGFIELD, MASSACHUSETTS

# THUMB ONE DEPARTURE (RNAV)

BRADLEY DEP CON  
125.35 281.5  
ATIS 127.1 263.15  
GND CON  
121.7 289.4  
WESTFIELD TOWER ★  
125.075 (CTAF) 251.1

RNAV 1- DME/DME/IRU or GPS.  
RADAR required.

**TOP ALTITUDE:  
3000**

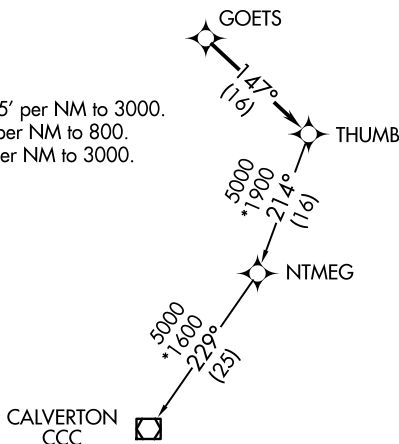


### TAKEOFF MINIMUMS:

Rwys 2, 20: Standard with minimum climb of 275' per NM to 3000.

Rwy 15: Standard with minimum climb of 460' per NM to 800.

Rwy 33: Standard with minimum climb of 500' per NM to 3000.



NOTE: Chart not to scale.



## DEPARTURE ROUTE DESCRIPTION

TAKEOFF RUNWAY 2: Climb on heading 024° to 3000 for RADAR vectors to GOETS, thence . . .

TAKEOFF RUNWAY 15: Climb on heading 154° to 2500 for RADAR vectors to GOETS, thence . . .

TAKEOFF RUNWAY 20: Climb on heading 204° to 3000 for RADAR vectors to GOETS, thence . . .

TAKEOFF RUNWAY 33: Climb on heading 334° to 3000 for RADAR vectors to GOETS, thence . . .

. . . on track 147° to THUMB, then on CALVERTON Transition. Maintain 3000. Expect filed altitude 10 minutes after departure.

CALVERTON TRANSITION (THUMB1.CCC)

THUMB ONE DEPARTURE (RNAV)  
(THUMB1.THUMB) 27NOV25

WESTFIELD/SPRINGFIELD, MASSACHUSETTS  
WESTFIELD-BARNES RGNL (BAF)

NE-1, 16 APR 2026 to 14 MAY 2026

NE-1, 16 APR 2026 to 14 MAY 2026