

BAF VORTAC <b>113.0</b> Chan <b>77</b>	APP CRS <b>025°</b>	Rwy Ldg TDZE <b>264</b> Apt Elev <b>270</b>
----------------------------------------------	------------------------	---------------------------------------------------

# VOR or TACAN RWY 2

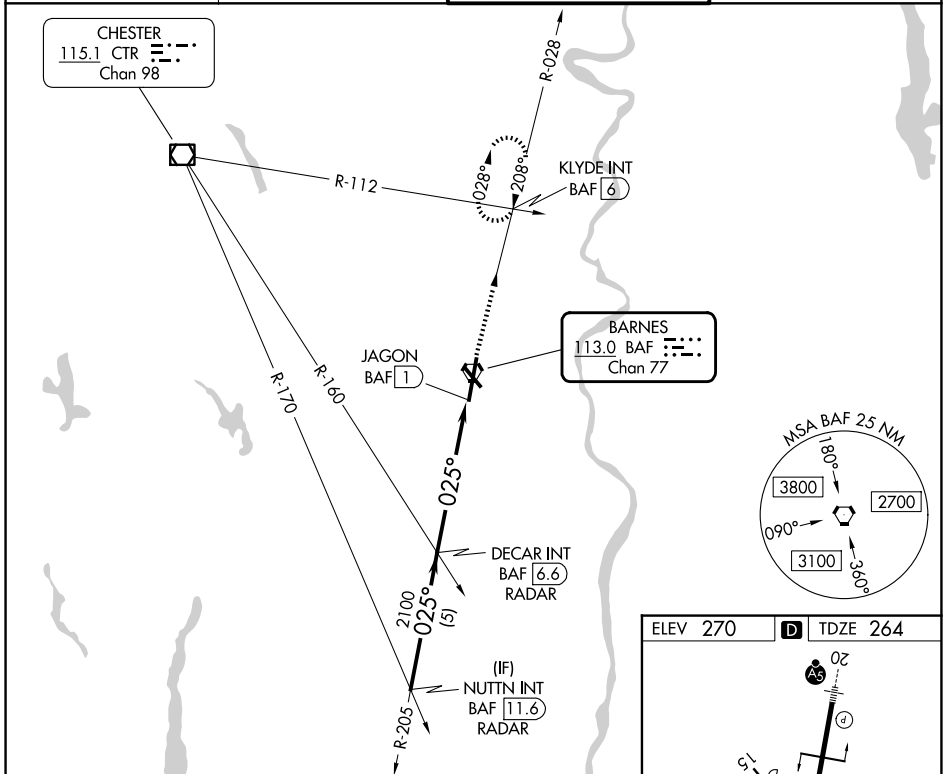
WESTFIELD-BARNES RGNL (BAF)

RADAR required for procedure entry.

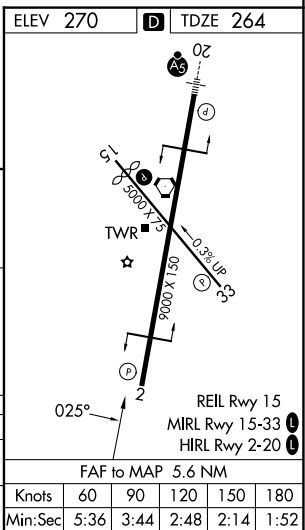
**⚠** Rwy 2 helicopter visibility reduction below 3/4 SM NA. When local altimeter setting not received, use BDL altimeter setting and increase all MDAs 60 feet and S-2 visibility Cat C/D/E 1/4 SM. VDP NA when using BDL altimeter setting.  
Circling Rwy 1.5 NA at night.

**MISSED APPROACH:** Climb to 3000 on BAF VORTAC R-028 to KLYDE INT/BAF 6 DME and hold, continue climb-in-hold to 3000.

ATIS <b>127.1 263.15</b>	BRADLEY APP CON <b>125.35 281.5</b>	WESTFIELD TOWER ★ <b>125.075 (CTAF) 0 251.1</b>	GND CON <b>121.7 289.4</b>
-----------------------------	----------------------------------------	----------------------------------------------------	-------------------------------



NUTTN INT BAF 11.6 RADAR	VGSI and descent angles not coincident (VGSI Angle 3.00/TCH 50).		3000 ↑ BAF R-028	KLYDE INT	
	DECAR INT BAF 6.6 RADAR	JAGON BAF 1			BAF VORTAC
3000	2100	3.02° TCH 43	1.8 NM		
5 NM		3.8 NM			
CATEGORY	A	B	C	D	E
S-2	900-1	636 (700-1)	900-1 3/4		636 (700-1 3/4)
CIRCLING	1160-1 1/4	890 (900-1 1/4)	1160-2 3/4	1660-3	1390 (1400-3)



NE-1, 16 APR 2026 to 14 MAY 2026

NE-1, 16 APR 2026 to 14 MAY 2026