


(MLB.MLB2) 26078

# MELBOURNE TWO ARRIVAL

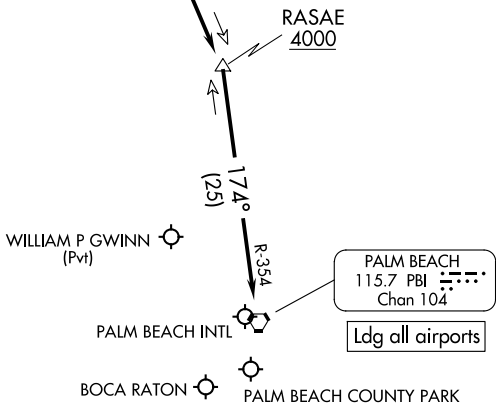
AL-449 (FAA)

WEST PALM BEACH, FLORIDA

PALM BEACH APP CON  
 124.6 317.4  
 BCT D-ATIS  
 121.125  
 PBI D-ATIS  
 123.75

MELBOURNE  
 115.85 MLB   
 Chan 105(Y)

NOTE: RADAR required.  
 NOTE: DME required.  
 NOTE: Turboprop and prop aircraft only.



NOTE: Chart not to scale.

## ARRIVAL ROUTE DESCRIPTION

LANDING ALL AIRPORTS: From over MELBOURNE VOR/DME (MLB) R-164 to cross RASAE at or above 4000, then on PALM BEACH VORTAC (PBI) R-354 to PBI VORTAC. Expect RADAR vectors to final approach course.

SE-3, 16 APR 2026 to 14 MAY 2026

SE-3, 16 APR 2026 to 14 MAY 2026

# MELBOURNE TWO ARRIVAL

WEST PALM BEACH, FLORIDA

(MLB.MLB2) 02DEC21