

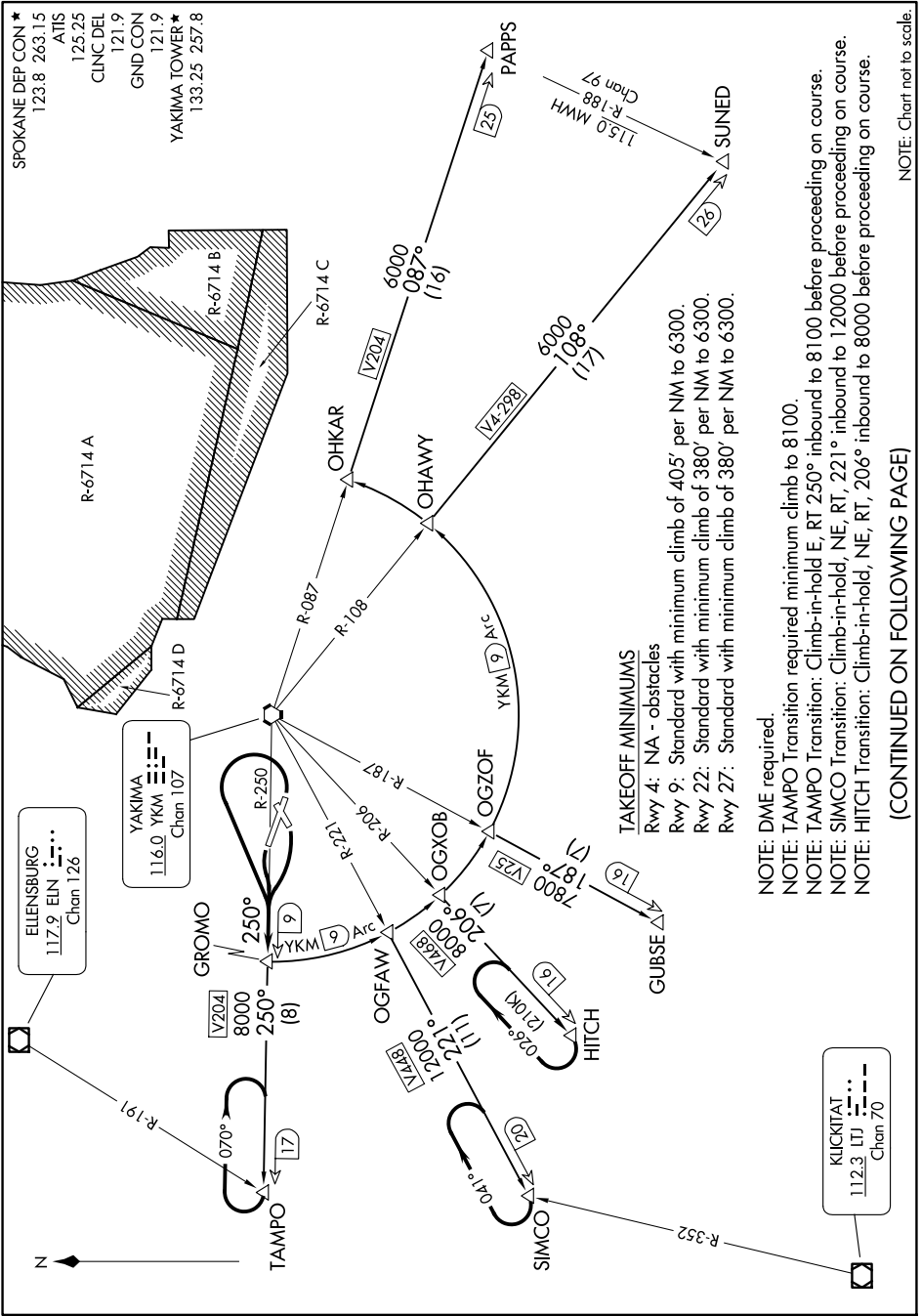
GROMO FOUR DEPARTURE

AL-465 (FAA)

YAKIMA AIR TRML/MCALLISTER FLD (YKM)

YAKIMA, WASHINGTON

NW-1, 16 APR 2026 to 14 MAY 2026



TAKEOFF MINIMUMS
 Rwy 4: NA - obstacles
 Rwy 9: Standard with minimum climb of 405' per NM to 6300.
 Rwy 22: Standard with minimum climb of 380' per NM to 6300.
 Rwy 27: Standard with minimum climb of 380' per NM to 6300.

NOTE: DME required.
NOTE: TAMPO Transition required minimum climb to 8100.
NOTE: TAMPO Transition: Climb-in-hold E, RT 250° inbound to 8100 before proceeding on course.
NOTE: SIMCO Transition: Climb-in-hold, NE, RT, 221° inbound to 12000 before proceeding on course.
NOTE: HITCH Transition: Climb-in-hold, NE, RT, 206° inbound to 8000 before proceeding on course.

(CONTINUED ON FOLLOWING PAGE)

NOTE: Chart not to scale.

NW-1, 16 APR 2026 to 14 MAY 2026