

LOC I-DRO 109.1	APP CRS 027°	Rwy Ldg TDZE Apt Elev	9201 6643 6689
---------------------------	------------------------	-----------------------------	---

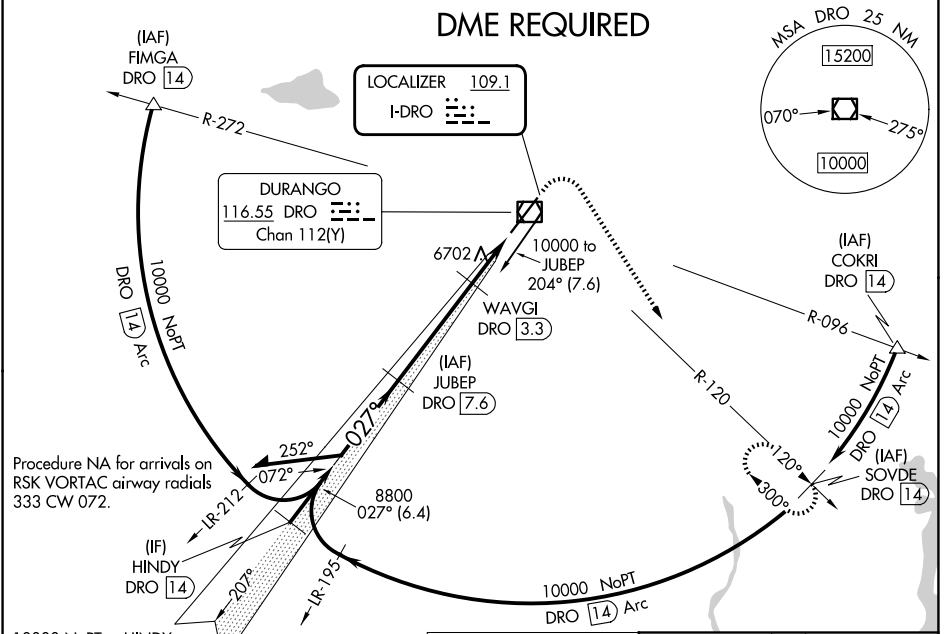
ILS or LOC/DME RWY 3

DURANGO-LA PLATA COUNTY (DRO)

NA DME required. DME from DRO VOR/DME. Simultaneous reception of I-DRO and DRO VOR/DME required. For non MALSR, increase S-LOC 3 Cat C/D visibility to ¾ mile.

MALSR MISSED APPROACH: Climb to 7500 then climbing right turn to 10000 on heading 140° and on DRO VOR/DME R-120 to SOVDE/DRO 14 DME and hold.

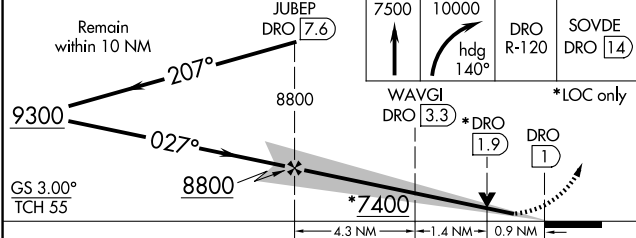
ASOS 120.625	DENVER CENTER 118.575 348.7	UNICOM 122.8 (CTAF)
------------------------	---------------------------------------	-------------------------------



SW-1, 16 APR 2026 to 14 MAY 2026

SW-1, 16 APR 2026 to 14 MAY 2026

Procedure NA for arrivals on RSK VORTAC airway radials 333 CW 072.	Procedure NA for arrivals on RSK VORTAC airway radials 333 CW 072.	Procedure NA for arrivals on RSK VORTAC airway radials 333 CW 072.	Procedure NA for arrivals on RSK VORTAC airway radials 333 CW 072.
--	--	--	--



CATEGORY	A	B	C	D
S-ILS 3		6843-½	200 (200-½)	
S-LOC 3		6960-½	317 (300-½)	
CIRCLING	7160-1 471 (500-1)	7220-1 531 (600-1)	7540-2½ 851 (900-2½)	8140-3 1451 (1500-3)

ELEV 6689 **D** TDZE 6643

REIL Rwy 21 **1**
HIRL Rwy 3-21 **1**