


WAAS CH <b>63103</b> W35A	APP CRS <b>355°</b>	Rwy Ldg TDZE Apt Elev	<b>7299</b> <b>2885</b> <b>2891</b>
---------------------------------	------------------------	-----------------------------	---

# RNAV (GPS) RWY 35

GARDEN CITY RGNL (GCK)

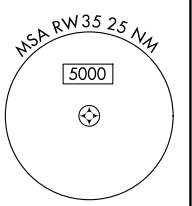
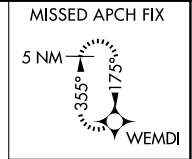
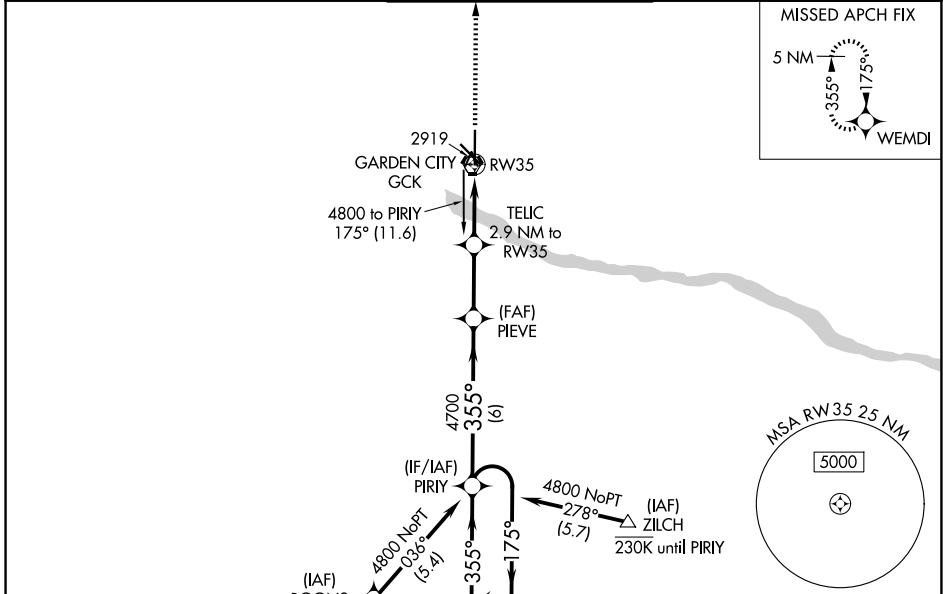
RNP APCH-GPS.

**⚠** For uncompensated Baro-VNAV systems, LNAV/VNAV NA below -20°C or above 54°C. For inop ALS, increase LNAV/VNAV Cats C/D visibility to ¾ SM, and LNAV Cats C/D visibility to ½ SM.

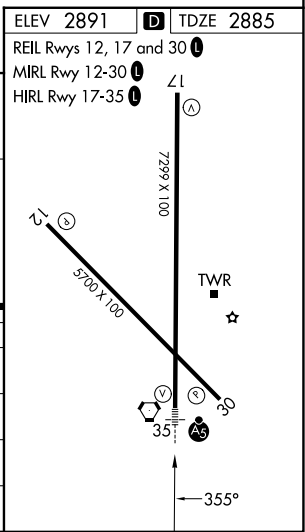
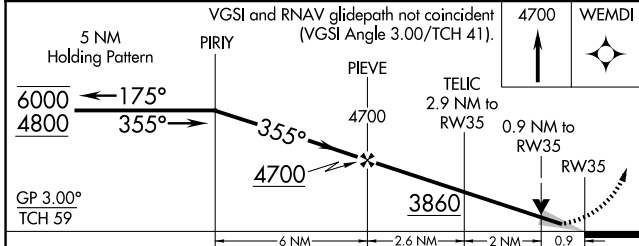
MALSR 

MISSED APPROACH: Climb to 4700 direct WEMDI and hold.

ASOS <b>121.325</b>	KANSAS CITY CENTER <b>125.2 285.425</b>	GARDEN CITY TOWER * <b>118.15 (CTAF) 0 254.4</b>	GND CON <b>119.0 254.4</b>	UNICOM <b>122.95</b>
------------------------	--	---	-------------------------------	-------------------------



ELEV 2891	<b>D</b> TDZE 2885
REIL Rwy 12, 17 and 30	<b>L</b>
MIRL Rwy 12-30	<b>L</b>
HIRL Rwy 17-35	<b>L</b>



CATEGORY	A	B	C	D
LPV DA		3085-½	200 (200-½)	
LNAV/VNAV DA		3135-½	250 (300-½)	
LNAV MDA		3180-½	295 (300-½)	
CIRCLING	3320-1 429 (500-1)	3360-1 469 (500-1)	3480-1½ 589 (600-1½)	3480-2 589 (600-2)

NC-2, 16 APR 2026 to 14 MAY 2026

NC-2, 16 APR 2026 to 14 MAY 2026