

VORTAC GCK 113.3 Chan 80	APP CRS 344°	Rwy Ldg TDZE Apt Elev	7299 2885 2891
--	------------------------	-----------------------------	---

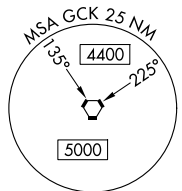
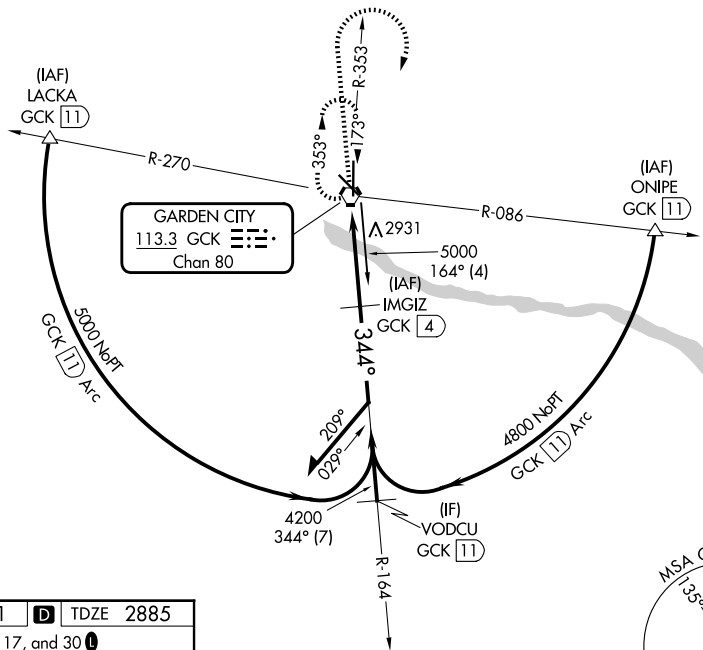
VOR RWY 35

GARDEN CITY RGNL (GCK)

DME required.		MALS R	MISSED APPROACH: Climb to 4000 then climbing right turn to 4800 direct GCK VORTAC and hold.	
<p>▼ For inop ALS, increase S-35 Cat C visibility to ¾ SM. ▲ Inop table does not apply to S-35 Cat D.</p>				
ASOS 121.325	KANSAS CITY CENTER 125.2 285.425	GARDEN CITY TOWER ★ 118.15 (CTAF) 0 254.4	GND CON 119.0 254.4	UNICOM 122.95

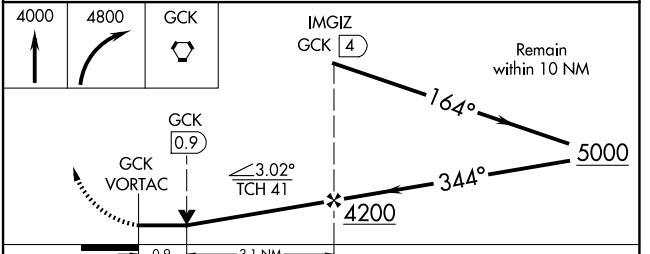
NC-2, 16 APR 2026 to 14 MAY 2026

NC-2, 16 APR 2026 to 14 MAY 2026



ELEV 2891	D	TDZE 2885
-----------	---	-----------

REIL Rwy 12, 17, and 30
 MIRL Rwy 12-30
 HIRL Rwy 17-35



CATEGORY	A	B	C	D
S-35	3200-½ 315 (400-½)		3200-¾ 315 (400-¾)	3200-1 315 (400-1)
CIRCLING	3320-1 429 (500-1)	3360-1 469 (500-1)	3480-1½ 589 (600-1½)	3480-2 589 (600-2)