

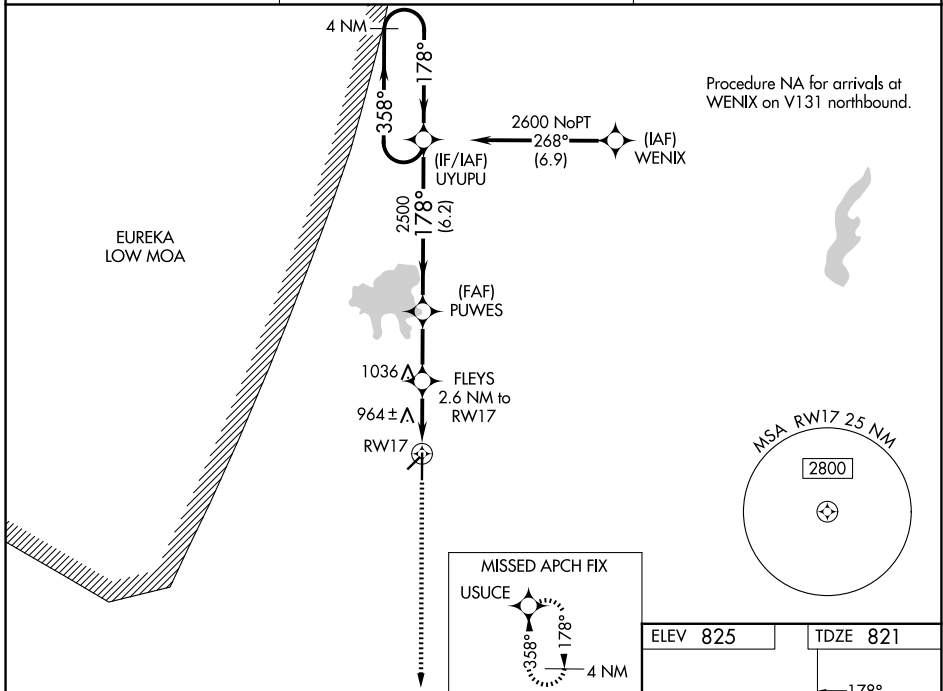
WAAS CH <b>50338</b> <b>W17A</b>	APP CRS <b>178°</b>	Rwy Ldg TDZE Apt Elev	<b>5501</b> <b>821</b> <b>825</b>
--	------------------------	-----------------------------	---

# RNAV (GPS) RWY 17

INDEPENDENCE MUNI (IDP)

RNP APCH.	<p>▼ For uncompensated Baro-VNAV systems, LNAV/VNAV NA below -1.6°C (4°F) or above 54°C (130°F). Circling Rwy 4, 22 NA at night. Rwy 17 helicopter visibility reduction below 3/4 SM NA.</p> <p>▲ MISSED APPROACH: Climb to 2600 direct USUCE and hold.</p>
-----------	---

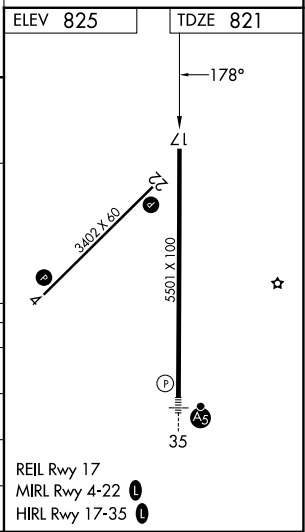
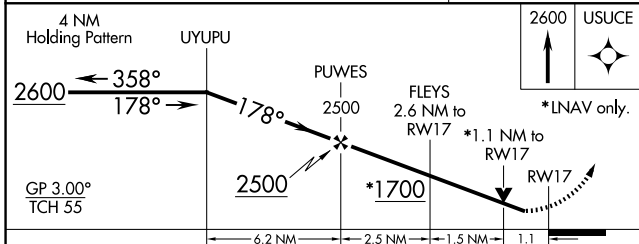
AWOS-3PT <b>118.525</b>	KANSAS CITY CENTER <b>128.6 282.325</b>	UNICOM <b>123.05 (CTAF) 0</b>
----------------------------	--	----------------------------------



Procedure NA for arrivals at WENIX on V131 northbound.

NC-2, 16 APR 2026 to 14 MAY 2026

NC-2, 16 APR 2026 to 14 MAY 2026



CATEGORY	A	B	C	D
LPV DA		1021-3/4	200 (200-3/4)	
LNAV/VNAV DA		1076-3/4	255 (300-3/4)	
LNAV MDA	1220-1	399 (400-1)	1220-1 1/8	399 (400-1 1/8)
CIRCLING	1280-1	455 (500-1)	1340-1 1/2	1680-2 3/4
			515 (600-1 1/2)	855 (900-2 3/4)

REIL Rwy 17  
MIRL Rwy 4-22 0  
HIRL Rwy 17-35 0