

# ILS or LOC RWY 4


LYNCHBURG RGNL/PRESTON GLENN FLD (LYH)

LOC I-LYH <b>110.1</b>	APP CRS <b>036°</b>	Rwy Ldg TDZE Apt Elev	<b>6800</b> <b>905</b> <b>938</b>
---------------------------	------------------------	-----------------------------	---

ADF required for LOC only. DME required.

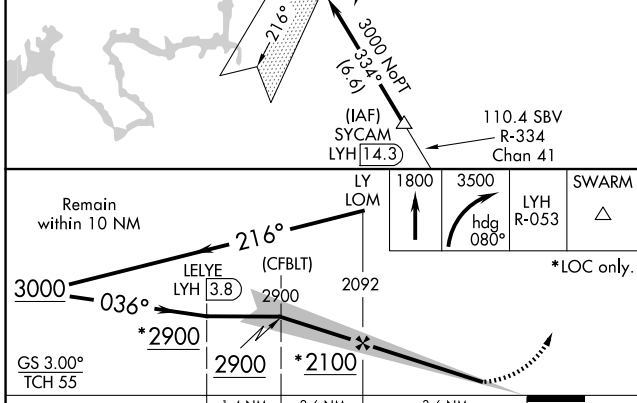
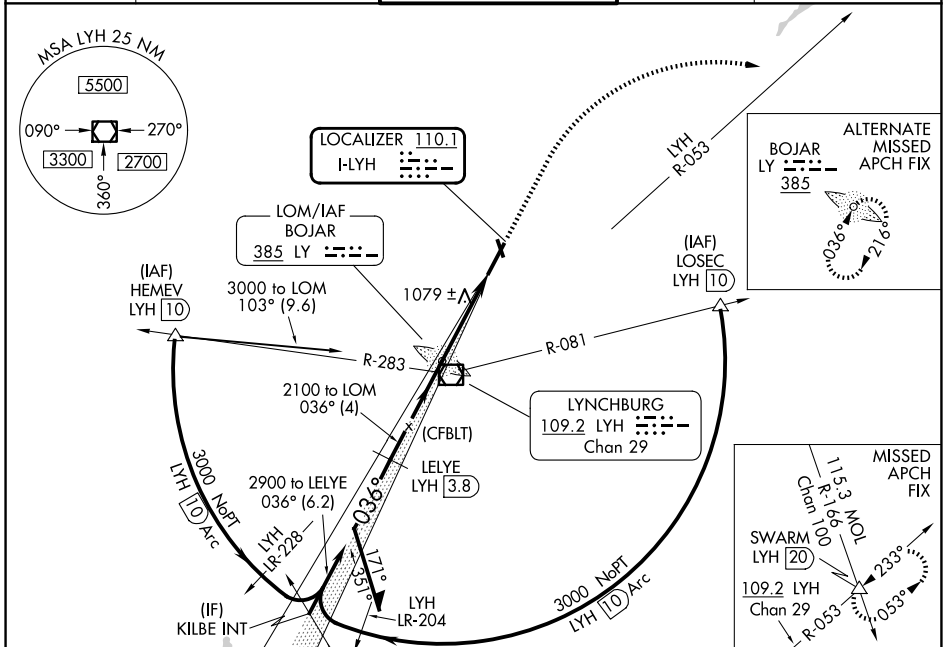
⚠ Circling Rwy 17 NA at night. DME from LYH VOR/DME. Simultaneous reception of I-LYH and LYH DME required.

⚠ \*\* RVR 1800 authorized with use of FD or AP or HUD to DA.

MALSR 

MISSED APPROACH: Climb to 1800 then climbing right turn to 3500 on heading 080° and on LYH VOR/DME R-053 to SWARM INT/LYH 20 DME and hold.

ATIS <b>119.8</b>	ROANOKE APP CON <b>135.0 254.325</b>	LYNCHBURG TOWER ★ <b>127.65 (CTAF) 0 257.8</b>	GND CON <b>121.9</b>	UNICOM <b>122.95</b>
----------------------	---	---	-------------------------	-------------------------



CATEGORY	A	B	C	D
S-ILS 4 **	1105/24 200 (200-½)			
S-LOC 4	1320/24	415 (400-½)	1320/40	415 (400-¾)
CIRCLING	1660-1 722 (800-1)	1780-1¼ 842 (900-1¼)	1800-2½ 862 (900-2½)	1800-2¾ 862 (900-2¾)

Knots	60	90	120	150	180
Min:Sec	3:36	2:24	1:48	1:26	1:12

# ILS or LOC RWY 4

NE-3, 16 APR 2026 to 14 MAY 2026

NE-3, 16 APR 2026 to 14 MAY 2026