

WAAS CH <b>77832</b> <b>W17A</b>	APP CRS <b>171°</b>	Rwy Ldg <b>5214</b> TDZE <b>595</b> Apt Elev <b>595</b>
--	------------------------	---

# RNAV (GPS) RWY 17

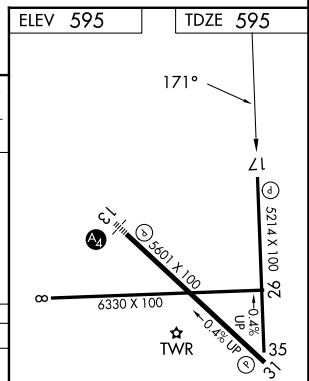
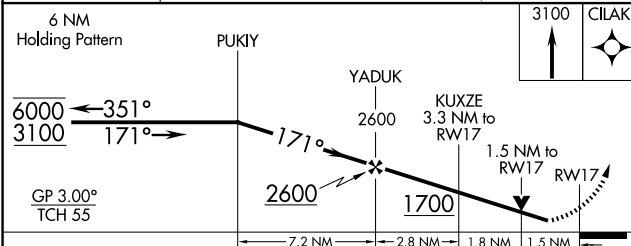
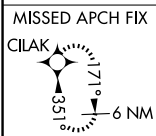
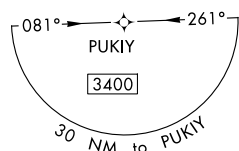
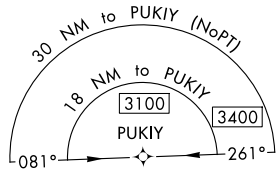
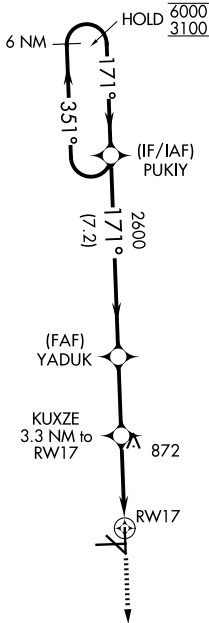
SAN MARCOS RGNL (HYI)

RNP APCH - GPS.

**⚠** Circling NA for Cat E southwest of Rwy 13-31. For uncompensated Baro-VNAV systems, LNAV/VNAV NA below -16°C or above 54°C. Baro-VNAV and VDP NA when using BAZ altimeter setting. Rwy 17 helicopter visibility reduction below 3/4 SM NA. When local altimeter setting not received, use BAZ altimeter setting and increase LPV DA to 1003 feet and all visibilities 1/8 SM; increase LNAV/VNAV DA to 1095 feet; increase all MDAs 60 feet and LNAV visibility Cats C/D/E 1/8 SM, and Circling visibility Cats C/D 1/4 SM.

MISSED APPROACH:  
Climb to 3100 direct CILAK and hold.

ATIS <b>120.825</b>	AUSTIN APP CON <b>119.0 370.85</b>	SAN MARCOS TOWER ★ <b>126.825</b> (CTAF) <b>0</b>	GND CON <b>120.125</b>
------------------------	---------------------------------------	--	---------------------------



CATEGORY	A	B	C	D	E
LPV DA	960-1		365 (400-1)		
LNAV/VNAV DA	1052-1 3/8		457 (500-1 3/8)		
LNAV MDA	1140-1 545 (600-1)		1140-1 5/8 545 (600-1 5/8)		
CIRCLING	1140-1 545 (600-1)		1240-1 3/4 645 (700-1 3/4)	1320-2 1/4 725 (800-2 1/4)	1340-2 3/4 745 (800-2 3/4)

MIRL Rwy 8-26, 13-31, and 17-35 **0**

SC-3, 16 APR 2026 to 14 MAY 2026

SC-3, 16 APR 2026 to 14 MAY 2026